

### 35-1736: Polyclonal Antibody to PLC- Gamma2 (Ab-1217)

<b>Clonality :</b>	Polyclonal
<b>Application :</b>	IHC,IF
<b>Reactivity :</b>	Human,Mouse,Rat
<b>Gene :</b>	PLCG2
<b>Gene ID :</b>	5336
<b>Uniprot ID :</b>	P16885
<b>Format :</b>	Purified
<b>Alternative Name :</b>	PLC-IV, PLC-gamma2, Phospholipase C-gamma-2
<b>Isotype :</b>	Rabbit IgG
<b>Immunogen Information :</b>	Peptide sequence around aa.1215~1219 (F-L-Y-D-T) derived from Human PLCg2.

#### Description

The production of the second messenger molecules diacylglycerol. (DAG) and inositol 1,4,5-trisphosphate (IP3) is mediated by activated phosphatidylinositol-specific phospholipase C enzymes. It is a crucial enzyme in transmembrane signaling.

#### Product Info

<b>Amount :</b>	50 µl / 100 µl
<b>Content :</b>	Supplied at 1.0mg/mL in phosphate buffered saline (without Mg <sup>2+</sup> and Ca <sup>2+</sup> ), pH 7.4, 150mM NaCl, 0.02% sodium azide and 50% glycerol.
<b>Storage condition :</b>	Store the antibody at 4°C, stable for 6 months. For long-term storage, store at -20°C. Avoid repeated freeze and thaw cycles.

#### Application Note

Predicted MW: 150kd, Immunohistochemistry: 1:50~1:100, Immunofluorescence: 1:100~1:200

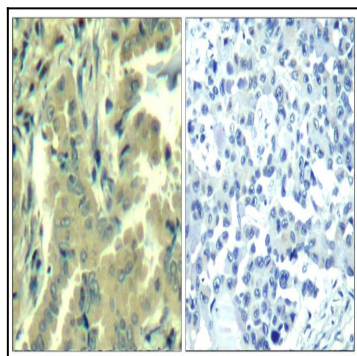


Figure 1: Immunohistochemical analysis of paraffin-embedded human lung carcinoma tissue using PLC-g2(Ab-1217) Antibody 35-1736 (left) or the same antibody preincubated with blocking peptide(right).

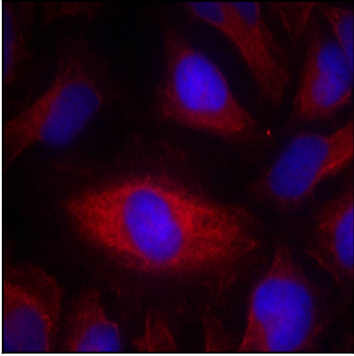


Figure 2: Immunofluorescence staining of methanol-fixed HeLa cells using PLC-g2(Ab-1217) Antibody 35-1736 .