

## 35-1734: Polyclonal Antibody to Jak2 (Ab-570)

<b>Clonality :</b>	Polyclonal
<b>Application :</b>	IHC
<b>Reactivity :</b>	Rat,Human
<b>Gene :</b>	JAK2
<b>Gene ID :</b>	3717
<b>Uniprot ID :</b>	O60674
<b>Format :</b>	Purified
<b>Alternative Name :</b>	JAK-2, Janus kinase 2, kinase Jak2
<b>Isotype :</b>	Rabbit IgG
<b>Immunogen Information :</b>	Peptide sequence around aa.568~572 (G-D-Y-G-Q) derived from Human JAK2.

### Description

Plays a role in leptin signaling and control of body weight.

### Product Info

<b>Amount :</b>	50 $\mu$ l / 100 $\mu$ l
<b>Content :</b>	Supplied at 1.0mg/mL in phosphate buffered saline (without Mg <sup>2+</sup> and Ca <sup>2+</sup> ), pH 7.4, 150mM NaCl, 0.02% sodium azide and 50% glycerol.
<b>Storage condition :</b>	Store the antibody at 4°C, stable for 6 months. For long-term storage, store at -20°C. Avoid repeated freeze and thaw cycles.

### Application Note

Predicted MW: 125kd, Immunohistochemistry: 1:50~1:100

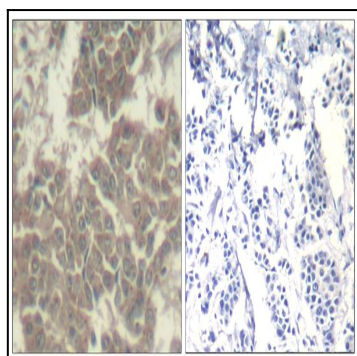


Figure 1: Immunohistochemical analysis of paraffin-embedded human breast carcinoma tissue using Jak2(Ab-570) Antibody 35-1734 (left) or the same antibody preincubated with blocking peptide(right).