

## 35-1731: Polyclonal Antibody to HDAC4/HDAC5/HDAC9 (Ab-246/259/220)

<b>Clonality :</b>	Polyclonal
<b>Application :</b>	WB,IHC,IF
<b>Reactivity :</b>	Human,Mouse
<b>Gene :</b>	HDAC4
<b>Gene ID :</b>	9759
<b>Uniprot ID :</b>	P56524 /Q9UQL6 Q
<b>Format :</b>	Purified
<b>Alternative Name :</b>	HD4/HD5/HD9
<b>Isotype :</b>	Rabbit IgG
<b>Immunogen Information :</b>	Peptide sequence around aa.244~248/257~261/218~222 (T-A-S-E-P) derived from Human HDAC4/HDAC5/HDAC9.

### Description

Responsible for the deacetylation of lysine residues on the N-terminal part of the core histones (H2A, H2B, H3 and H4). Histone deacetylation gives a tag for epigenetic repression and plays an important role in transcriptional regulation, cell cycle progression and developmental events. Histone deacetylases act via the formation of large multiprotein complexes. Involved in muscle maturation via its interaction with the myocyte enhancer factors such as MEF2A, MEF2C and MEF2D. Cress, W.D. and Seto, E. (2000) J Cell Physiol 184, 1-16. Vigushin, D.M. and Coombes, R.C. (2004) Curr. Cancer Drug Targets 4, 205-218. Marmorstein, R. (2001) Cell Mol Life Sci 58, 693-703. Thiagalingam, S. et al. (2003) Ann. N.Y. Acad. Sci. 983, 84-100.

### Product Info

<b>Amount :</b>	50 $\mu$ l / 100 $\mu$ l
<b>Content :</b>	Supplied at 1.0mg/mL in phosphate buffered saline (without Mg <sup>2+</sup> and Ca <sup>2+</sup> ), pH 7.4, 150mM NaCl, 0.02% sodium azide and 50% glycerol.
<b>Storage condition :</b>	Store the antibody at 4°C, stable for 6 months. For long-term storage, store at -20°C. Avoid repeated freeze and thaw cycles.

### Application Note

Predicted MW: 140 124 111 kd, Western blotting: 1:500~1:1000, Immunohistochemistry: 1:50~1:100, Immunofluorescence: 1:100~1:200

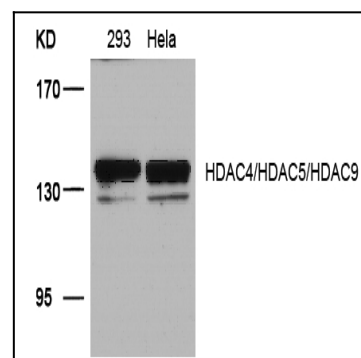


Figure 1: Western blot analysis of extracts from 293 and HeLa cells using HDAC4/HDAC5/HDAC9(Ab-246/259/220) Antibody 35-1731 .

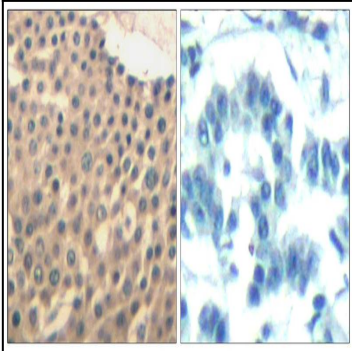


Figure 2: Immunohistochemical analysis of paraffin-embedded human lung carcinoma tissue using HDAC4/HDAC5/HDAC9(Ab-246/259/220) Antibody 35-1731 (left) or the same antibody preincubated with blocking peptide(right).

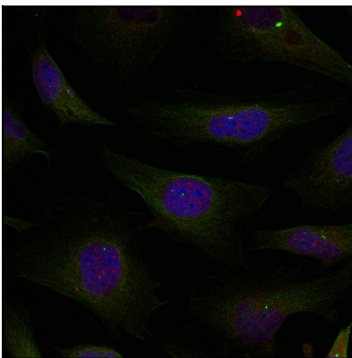


Figure 3: Immunofluorescence staining of methanol-fixed HeLa cells using HDAC4/HDAC5/HDAC9(Ab-246/259/220) Antibody 35-1731 .