

35-1728: Polyclonal Antibody to eIF4B (Ab-422)

Clonality :	Polyclonal
Application :	WB,IHC
Reactivity :	Human,Mouse,Rat
Gene :	EIF4B
Gene ID :	1975
Uniprot ID :	P23588
Format :	Purified
Alternative Name :	EIF4B
Isotype :	Rabbit IgG
Immunogen Information :	Peptide sequence around aa.420~424 (T-G-S-E-S) derived from Human eIF4B.

Description

Required for the binding of mRNA to ribosomes. Functions in close association with EIF4-F and EIF4-A. Binds near the 5'-terminal cap of mRNA in presence of EIF-4F and ATP. Promotes the ATPase activity and the ATP-dependent RNA unwinding activity of both EIF4-A and EIF4-F. Gingras, A.C. et al. (2001) Genes Dev. 15, 807-826. Duncan, R. and Hershey, J.W. (1985) J. Biol. Chem. 260, 5493-5497. Duncan, R.F. and Hershey, J.W. (1989) J. Cell Biol. 109, 1467-1481.

Product Info

Amount :	50 μ l / 100 μ l
Content :	Supplied at 1.0mg/mL in phosphate buffered saline (without Mg ²⁺ and Ca ²⁺), pH 7.4, 150mM NaCl, 0.02% sodium azide and 50% glycerol.
Storage condition :	Store the antibody at 4°C, stable for 6 months. For long-term storage, store at -20°C. Avoid repeated freeze and thaw cycles.

Application Note

Predicted MW: 80kd, Western blotting: 1:500~1:1000, Immunohistochemistry: 1:50~1:100

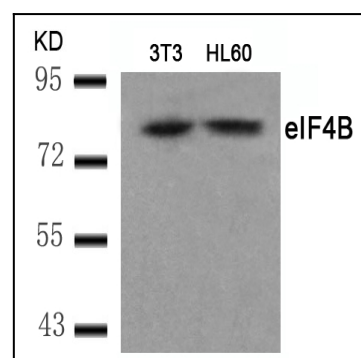


Figure 1: Western blot analysis of extracts from 3T3 and HL60 cells using eIF4B(Ab-422) Antibody 35-1728 .

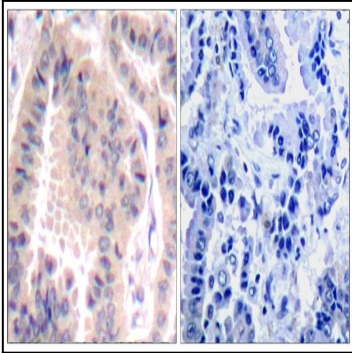


Figure 2: Immunohistochemical analysis of paraffin-embedded human lung carcinoma tissue using eIF4B(Ab-422) Antibody 35-1728 (left) or the same antibody preincubated with blocking peptide(right).