

35-1727: Polyclonal Antibody to Her3/ErbB3 (Ab-1328)

Clonality :	Polyclonal
Application :	WB,IHC
Reactivity :	Human,Mouse,Rat
Gene :	ERBB3
Gene ID :	2065
Uniprot ID :	P21860
Format :	Purified
Alternative Name :	Tyrosine kinase-type cell surface receptor HER3
Isotype :	Rabbit IgG
Immunogen Information :	Peptide sequence around aa. 1326~1330 (P-D-Y-W-H) derived from Human Her3/ErbB3.

Description

Binds and is activated by neuregulins and NTAK.

Product Info

Amount :	50 μ l / 100 μ l
Content :	Supplied at 1.0mg/mL in phosphate buffered saline (without Mg ²⁺ and Ca ²⁺), pH 7.4, 150mM NaCl, 0.02% sodium azide and 50% glycerol.
Storage condition :	Store the antibody at 4°C, stable for 6 months. For long-term storage, store at -20°C. Avoid repeated freeze and thaw cycles.

Application Note

Predicted MW: 185kd, Western blotting: 1:500~1:1000, Immunohistochemistry: 1:50~1:100

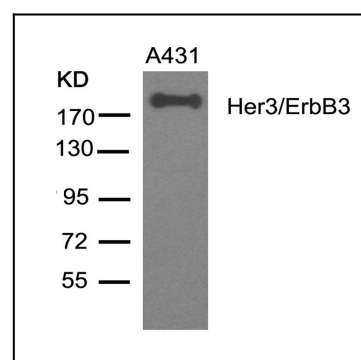


Figure 1: Western blot analysis of extracts from A431 cells using Her3/ErbB3(Ab-1328) Antibody 35-1727 .

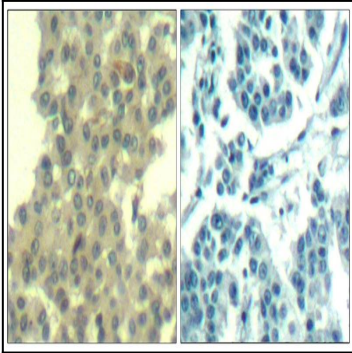


Figure 2: Immunohistochemical analysis of paraffin-embedded human breast carcinoma tissue using Her3/ErbB3(Ab-1328) Antibody 35-1727 (left) or the same antibody preincubated with blocking peptide(right).