

35-1724: Polyclonal Antibody to cofilin1/cofilin2 (Ab-88)

| | |
|--------------------------------|---|
| Clonality : | Polyclonal |
| Application : | WB,IHC,IF |
| Reactivity : | Human,Mouse,Rat |
| Gene : | CFL1 |
| Gene ID : | 1072 |
| Uniprot ID : | P23528/ Q9Y281 |
| Format : | Purified |
| Alternative Name : | Cofilin, non-muscle isoform 18 kDa phosphoprotein |
| Isotype : | Rabbit IgG |
| Immunogen Information : | Peptide sequence around aa. 86~90 (A-T-Y-E-T) derived from Human cofilin1/cofilin2. |

Description

Controls reversibly actin polymerization and depolymerization in a pH-sensitive manner. It has the ability to bind G- and F-actin in a 1:1 ratio of cofilin to actin. It is the major component of intranuclear and cytoplasmic actin rods. Carlier, M. et al. (1999) J. Biol. Chem. 274, 33827-33830. Arber, S. et al. (1998) Nature 393, 805-809. Yang, N. et al. (1998) Nature 393, 809-812.

Product Info

| | |
|----------------------------|--|
| Amount : | 50 µl / 100 µl |
| Content : | Supplied at 1.0mg/mL in phosphate buffered saline (without Mg ²⁺ and Ca ²⁺), pH 7.4, 150mM NaCl, 0.02% sodium azide and 50% glycerol. |
| Storage condition : | Store the antibody at 4°C, stable for 6 months. For long-term storage, store at -20°C. Avoid repeated freeze and thaw cycles. |

Application Note

Predicted MW: 19kd, Western blotting: 1:500~1:1000, Immunohistochemistry: 1:50~1:100, Immunofluorescence: 1:100~1:200

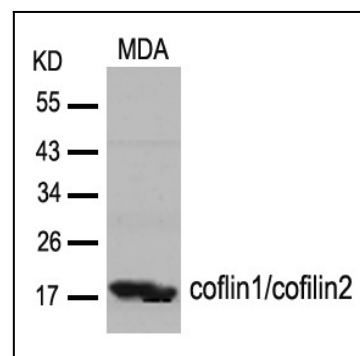


Figure 1: Western blot analysis of extracts from MDA cells using cofilin1/cofilin2(Ab-88) Antibody 35-1724 .

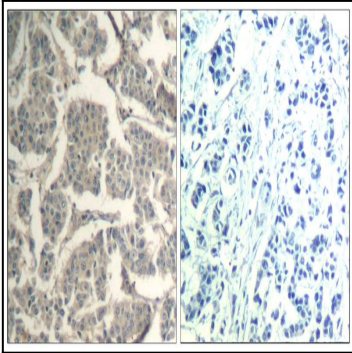


Figure 2: Immunohistochemical analysis of paraffin-embedded human breast carcinoma tissue using cofilin1/cofilin2(Ab-88) Antibody 35-1724 (left) or the same antibody preincubated with blocking peptide(right).

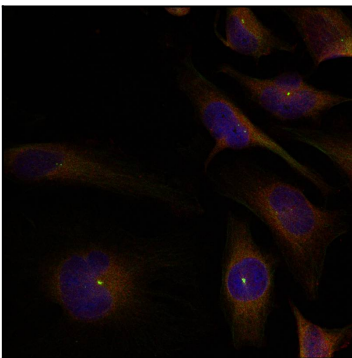


Figure 3: Immunofluorescence staining of methanol-fixed HeLa cells using cofilin1/cofilin2(Ab-88) Antibody 35-1724 .