

35-1719: Polyclonal Antibody to ASH2L

Clonality :	Polyclonal
Application :	WB
Reactivity :	Human
Gene :	ASH2L
Gene ID :	9070
Uniprot ID :	Q9UBL3
Format :	Purified
Alternative Name :	ASH2, Bre2, ASH2L1, ASH2L2
Isotype :	Rabbit IgG
Immunogen Information :	Peptide sequence around aa.620~624(G-R-R-S-P) derived from Human ASH2L.

Description

Component of the Set1/Ash2 histone methyltransferase (HMT) complex, a complex that specifically methylates 'Lys-4' of histone H3, but not if the neighboring 'Lys-9' residue is already methylated. As part of the MLL1/MLL complex it is involved in methylation and dimethylation at 'Lys-4' of histone H3. May function as a transcriptional regulator. May play a role in hematopoiesis.

Product Info

Amount :	50 μ l / 100 μ l
Content :	Supplied at 1.0mg/mL in phosphate buffered saline (without Mg ²⁺ and Ca ²⁺), pH 7.4, 150mM NaCl, 0.02% sodium azide and 50% glycerol.
Storage condition :	Store the antibody at 4°C, stable for 6 months. For long-term storage, store at -20°C. Avoid repeated freeze and thaw cycles.

Application Note

Predicted MW: 65 80kd, Western blotting: 1:500~1:1000

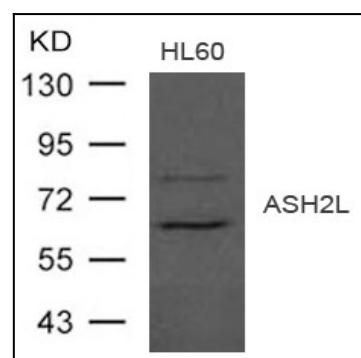


Figure 1: Western blot analysis of extract from HL-60 cells using ASH2L Antibody 35-1719