

35-1714: Polyclonal Antibody to CD10

Clonality :	Polyclonal
Application :	WB
Reactivity :	Human,Mouse,Rat
Gene :	MME
Gene ID :	4311
Uniprot ID :	P08473
Format :	Purified
Alternative Name :	NEP, MME, SFE, CALLA, MGC126681
Isotype :	Rabbit IgG
Immunogen Information :	Peptide sequence around aa.6~10(S-Q-M-D-I) derived from Human CD10.

Description

Thermolysin-like specificity, but is almost confined on acting on polypeptides of up to 30 amino acids. Biologically important in the destruction of opioid peptides such as Met- and Leu-enkephalins by cleavage of a Gly-Phe bond. Able to cleave angiotensin-1, angiotensin-2 and angiotensin 1-9. Involved in the degradation of atrial natriuretic factor (ANF). Displays UV-inducible elastase activity toward skin preelastic and elastic fibers.

Product Info

Amount :	50 µl / 100 µl
Content :	Supplied at 1.0mg/mL in phosphate buffered saline (without Mg ²⁺ and Ca ²⁺), pH 7.4, 150mM NaCl, 0.02% sodium azide and 50% glycerol.
Storage condition :	Store the antibody at 4°C, stable for 6 months. For long-term storage, store at -20°C. Avoid repeated freeze and thaw cycles.

Application Note

Predicted MW: 100kd, Western blotting: 1:500

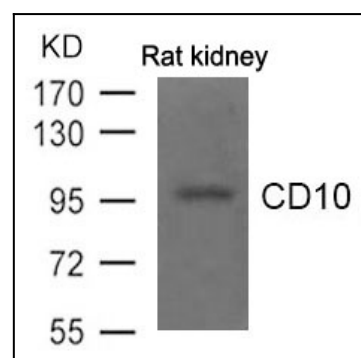


Figure 1: Western blot analysis of extract from Rat kidney tissue using CD10 Antibody 35-1714