

## 35-1712: Polyclonal Antibody to NSE

<b>Clonality :</b>	Polyclonal
<b>Application :</b>	WB
<b>Reactivity :</b>	Human,Mouse
<b>Gene :</b>	ENO2
<b>Gene ID :</b>	2026
<b>Uniprot ID :</b>	P09104
<b>Format :</b>	Purified
<b>Alternative Name :</b>	ENO2, 2-phospho-D-glycerate hydro-lyase, Enolase 2, Neural enolase
<b>Isotype :</b>	Rabbit IgG
<b>Immunogen Information :</b>	Peptide sequence around aa.6~10(I-W-A-R-E)derived from Human NSE.

### Description

Has neurotrophic and neuroprotective properties on a broad spectrum of central nervous system (CNS) neurons. Binds, in a calcium-dependent manner, to cultured neocortical neurons and promotes cell survival.

### Product Info

<b>Amount :</b>	50 $\mu$ l / 100 $\mu$ l
<b>Content :</b>	Supplied at 1.0mg/mL in phosphate buffered saline (without Mg <sup>2+</sup> and Ca <sup>2+</sup> ), pH 7.4, 150mM NaCl, 0.02% sodium azide and 50% glycerol.
<b>Storage condition :</b>	Store the antibody at 4°C, stable for 6 months. For long-term storage, store at -20°C. Avoid repeated freeze and thaw cycles.

### Application Note

Predicted MW: 47kd, Western blotting: 1:500~1:1000

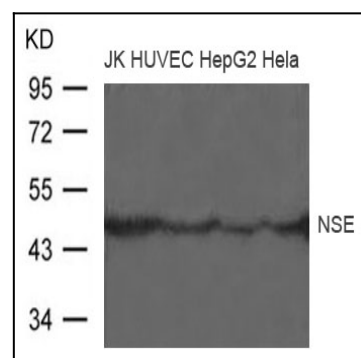


Figure 1: Western blot analysis of extract from JK, HUVEC, HepG2 and Hela cells using NSE Antibody 35-1712