

35-1710: Polyclonal Antibody to DLK1

| | |
|--------------------------------|--|
| Clonality : | Polyclonal |
| Application : | WB |
| Reactivity : | Human |
| Gene : | DLK1 |
| Gene ID : | 8788 |
| Uniprot ID : | P80370 |
| Format : | Purified |
| Alternative Name : | FA1, ZOG, pG2, PREF1, Pref-1 |
| Isotype : | Rabbit IgG |
| Immunogen Information : | Peptide sequence around aa.375~379(S-K-E-A-G) derived from Human DLK1. |

Description

May have a role in neuroendocrine differentiation.

Product Info

| | |
|----------------------------|--|
| Amount : | 50 μ l / 100 μ l |
| Content : | Supplied at 1.0mg/mL in phosphate buffered saline (without Mg ²⁺ and Ca ²⁺), pH 7.4, 150mM NaCl, 0.02% sodium azide and 50% glycerol. |
| Storage condition : | Store the antibody at 4°C, stable for 6 months. For long-term storage, store at -20°C. Avoid repeated freeze and thaw cycles. |

Application Note

Predicted MW: 51kd, Western blotting: 1:500~1:1000

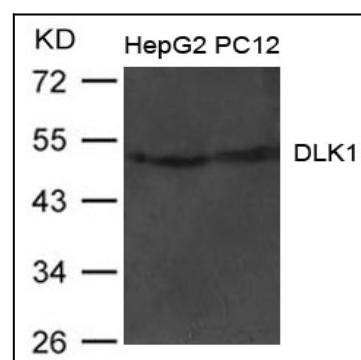


Figure 1: Western blot analysis of extract from HepG2 and PC12 cells using DLK1 Antibody 35-1710