

35-1709: Polyclonal Antibody to CD31(PECAM1) (Discontinued)

Clonality :	Polyclonal
Application :	WB
Reactivity :	Human
Gene :	PECAM1
Gene ID :	5175
Uniprot ID :	P16284
Format :	Purified
Alternative Name :	CD31, PECAM-1, FLJ34100, FLJ58394, PECAM1
Isotype :	Rabbit IgG
Immunogen Information :	Peptide sequence around aa.730~734(R-T-E-G-S) derived from Human CD31(PECAM1).

Description

Induces susceptibility to atherosclerosis By similarity. Cell adhesion molecule which is required for leukocyte transendothelial migration (TEM) under most inflammatory conditions. Tyr-690 plays a critical role in TEM and is required for efficient trafficking of PECAM1 to and from the lateral border recycling compartment (LBRC) and is also essential for the LBRC membrane to be targeted around migrating leukocytes. Prevents phagocyte ingestion of closely apposed viable cells by transmitting 'detachment' signals, and changes function on apoptosis, promoting tethering of dying cells to phagocytes (the encounter of a viable cell with a phagocyte via the homophilic interaction of PECAM1 on both cell surfaces leads to the viable cell's active repulsion from the phagocyte. During apoptosis, the inside-out signaling of PECAM1 is somehow disabled so that the apoptotic cell does not actively reject the phagocyte anymore. The lack of this repulsion signal together with the interaction of the eat-me signals and their respective receptors causes the attachment of the apoptotic cell to the phagocyte, thus triggering the process of engulfment). Isoform Delta15 is unable to protect against apoptosis. Modulates BDKRB2 activation. Regulates bradykinin- and hyperosmotic shock-induced ERK1/2 activation in human umbilical cord vein cells (HUVEC).

Product Info

Amount :	50 µg / 100 µg
Content :	Supplied at 1.0mg/mL in phosphate buffered saline (without Mg ²⁺ and Ca ²⁺), pH 7.4, 150mM NaCl, 0.02% sodium azide and 50% glycerol.
Storage condition :	Store the antibody at 4°C, stable for 6 months. For long-term storage, store at -20°C. Avoid repeated freeze and thaw cycles.

Application Note

Predicted MW: 130kd, Western blotting: 1:500~1:1000

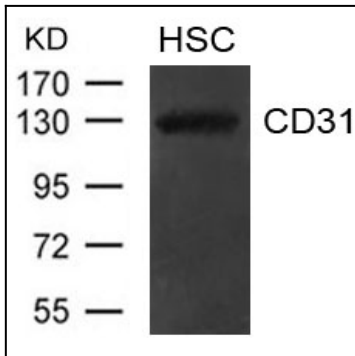


Figure 1: Western blot analysis of extract from hematopoietic stem cells using CD31(PECAM1) Antibody 35-1709