

## 35-1707: Polyclonal Antibody to CDCP1(CD318)

<b>Clonality :</b>	Polyclonal
<b>Application :</b>	WB
<b>Reactivity :</b>	Human
<b>Gene :</b>	CDCP1
<b>Gene ID :</b>	64866
<b>Uniprot ID :</b>	Q9H5V8
<b>Format :</b>	Purified
<b>Alternative Name :</b>	TRASK, SIMA135
<b>Isotype :</b>	Rabbit IgG
<b>Immunogen Information :</b>	Peptide sequence around aa.828~832( T-Q-E-P-M) derived from Human CDCP1(CD318).

### Description

May be involved in cell adhesion and cell matrix association. May play a role in the regulation of anchorage versus migration or proliferation versus differentiation via its phosphorylation. May be a novel marker for leukemia diagnosis and for immature hematopoietic stem cell subsets. Belongs to the tetraspanin web involved in tumor progression and metastasis.

### Product Info

<b>Amount :</b>	50 $\mu$ l / 100 $\mu$ l
<b>Content :</b>	Supplied at 1.0mg/mL in phosphate buffered saline (without Mg <sup>2+</sup> and Ca <sup>2+</sup> ), pH 7.4, 150mM NaCl, 0.02% sodium azide and 50% glycerol.
<b>Storage condition :</b>	Store the antibody at 4°C, stable for 6 months. For long-term storage, store at -20°C. Avoid repeated freeze and thaw cycles.

### Application Note

Predicted MW: 140kd, Western blotting: 1:500

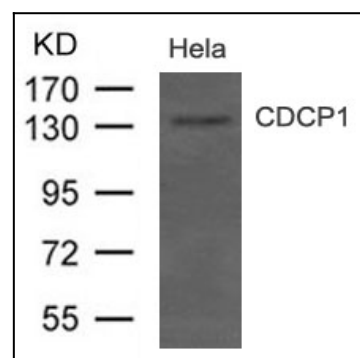


Figure 1: Western blot analysis of extract from HeLa cells using CDCP1(CD318) Antibody 35-1707