

35-1700: Polyclonal Antibody to CD34

Clonality :	Polyclonal
Application :	WB
Reactivity :	Human,Mouse,Rat
Gene :	CD34
Gene ID :	947
Uniprot ID :	P28906
Format :	Purified
Alternative Name :	CD34
Isotype :	Rabbit IgG
Immunogen Information :	Peptide sequence around aa.377~381(Q-H-V-V-A) derived from Human CD34.

Description

Possible adhesion molecule with a role in early hematopoiesis by mediating the attachment of stem cells to the bone marrow extracellular matrix or directly to stromal cells. Could act as a scaffold for the attachment of lineage specific glycans, allowing stem cells to bind to lectins expressed by stromal cells or other marrow components. Presents carbohydrate ligands to selectins.

Product Info

Amount :	50 μ l / 100 μ l
Content :	Supplied at 1.0mg/mL in phosphate buffered saline (without Mg ²⁺ and Ca ²⁺), pH 7.4, 150mM NaCl, 0.02% sodium azide and 50% glycerol.
Storage condition :	Store the antibody at 4°C, stable for 6 months. For long-term storage, store at -20°C. Avoid repeated freeze and thaw cycles.

Application Note

Predicted MW: 110kd, Western blotting: 1:500~1:1000

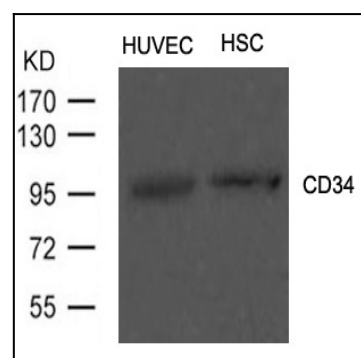


Figure 1: Western blot analysis of extract from HUVEC cells and Hematopoietic Stem Cells from Umbilical Cord Blood using CD34 Antibody 35-1700