

35-1695: Polyclonal Antibody to PKM1/2

Clonality :	Polyclonal
Application :	WB
Reactivity :	Human
Gene :	PKM
Gene ID :	5315
Uniprot ID :	P14618
Format :	Purified
Alternative Name :	PKM, PK3, OIP3, PK2
Isotype :	Rabbit IgG
Immunogen Information :	Peptide sequence around aa. 36~40(D-S-P-P-I) derived from Human PKM1/2.

Description

Glycolytic enzyme that catalyzes the transfer of a phosphoryl group from phosphoenolpyruvate (PEP) to ADP, generating ATP. Stimulates POU5F1-mediated transcriptional activation. Plays a general role in caspase independent cell death of tumor cells. The ratio between the highly active tetrameric form and nearly inactive dimeric form determines whether glucose carbons are channeled to biosynthetic processes or used for glycolytic ATP production. The transition between the 2 forms contributes to the control of glycolysis and is important for tumor cell proliferation and survival.

Product Info

Amount :	50 μ l / 100 μ l
Content :	Supplied at 1.0mg/mL in phosphate buffered saline (without Mg ²⁺ and Ca ²⁺), pH 7.4, 150mM NaCl, 0.02% sodium azide and 50% glycerol.
Storage condition :	Store the antibody at 4°C, stable for 6 months. For long-term storage, store at -20°C. Avoid repeated freeze and thaw cycles.

Application Note

Predicted MW: 60kd, Western blotting: 1:1000

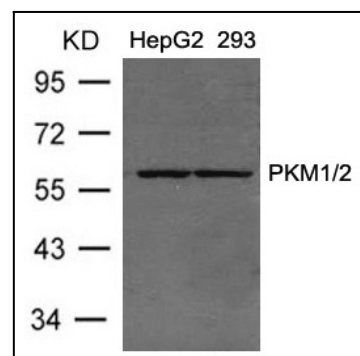


Figure 1: Western blot analysis of extracts from HepG2 and 293 cells using PKM1/2 Antibody 35-1695 .