

35-1694: Polyclonal Antibody to synaptophysin 2

Clonality :	Polyclonal
Application :	WB
Reactivity :	Rat,Mouse,Human
Gene :	Synpr
Gene ID :	66030
Uniprot ID :	P22831
Format :	Purified
Alternative Name :	Synpr
Isotype :	Rabbit IgG
Immunogen Information :	Peptide sequence around aa.257~261(G-P-T-S-F)derived from Rat synaptophysin 2.

Description

Synaptophysin (SYP) is a neuronal synaptic vesicle glycoprotein that is expressed in neuroendocrine cells and neoplasms, and thus can be used as a marker in tumor diagnosis (1). Synaptophysin contains four transmembrane domains that form a hexameric channel or gap junction-like pore (2). Synaptophysin binds to the SNARE protein synaptobrevin/VAMP, which prevents the inclusion of synaptobrevin in the synaptic vesicle fusion complex and creates a pool of synaptobrevin for exocytosis when synapse activity increases (3). Synaptophysin is also responsible for targeting synaptobrevin 2/VAMP2 to synaptic vesicles, a critical component of the fusion complex (4). Wiedenmann, B. et al. (1986) Proc Natl Acad Sci USA 83, 3500-4. Valtorta, F. et al. (2004) Bioessays 26, 445-53. Arthur, C.P. and Stowell, M.H. (2007) Structure 15, 707-14. Bonanomi, D. et al. (2007) Biochem J 404, 525-34.

Product Info

Amount :	50 µl / 100 µl
Content :	Supplied at 1.0mg/mL in phosphate buffered saline (without Mg ²⁺ and Ca ²⁺), pH 7.4, 150mM NaCl, 0.02% sodium azide and 50% glycerol.
Storage condition :	Store the antibody at 4°C, stable for 6 months. For long-term storage, store at -20°C. Avoid repeated freeze and thaw cycles.

Application Note

Predicted MW: 37kd, Western blotting: 1:500~1:1000

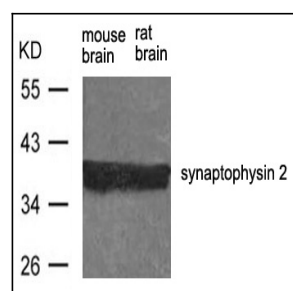


Figure 1: Western blot analysis of extract from rat brain and mouse brain using synaptophysin 2 Antibody 35-1694