

## 35-1692: Polyclonal Antibody to GRASP

<b>Clonality :</b>	Polyclonal
<b>Application :</b>	WB
<b>Reactivity :</b>	Human,Mouse,Rat
<b>Gene :</b>	Gripap1
<b>Gene ID :</b>	116493
<b>Uniprot ID :</b>	Q9JHZ4
<b>Format :</b>	Purified
<b>Alternative Name :</b>	Gripap, Grasp, GRIP1-associated protein
<b>Isotype :</b>	Rabbit IgG
<b>Immunogen Information :</b>	Peptide sequence around aa. 814-818(Q-E-I-V-R ) derived from Rat GRASP.

### Description

GRASP (GRP1-associated scaffold protein, tamalin) is a 395 amino acid protein encoded by the human gene GRASP . GRASP is a scaffold protein that com-prises multiple protein-interacting domains, including a 95 kDa postsynaptic density protein (PSD-95)/discs-large/ZO-1 (PDZ) domain, a leucine-zipper region and a carboxyl-terminal PDZ-binding motif. GRASP is involved with intracellular trafficking and contributes to the macromolecular organization of group 1 metabotropic glutamate receptors (mGluRs) at synapses. GRASP forms a heteromer composed of GRASP , PSCD2 and at least one mGluR-1. It also interacts with PSCD3, mGluR-2, mGluR-3 and mGluR-5. GRASP is highly expressed in brain and has lower levels of expression in lung, heart, embryo, kidney and ovary.

### Product Info

<b>Amount :</b>	50 µl / 100 µl
<b>Content :</b>	Supplied at 1.0mg/mL in phosphate buffered saline (without Mg <sup>2+</sup> and Ca <sup>2+</sup> ), pH 7.4, 150mM NaCl, 0.02% sodium azide and 50% glycerol.
<b>Storage condition :</b>	Store the antibody at 4°C, stable for 6 months. For long-term storage, store at -20°C. Avoid repeated freeze and thaw cycles.

### Application Note

Predicted MW: 95kd, Western blotting: 1:500~1:1000

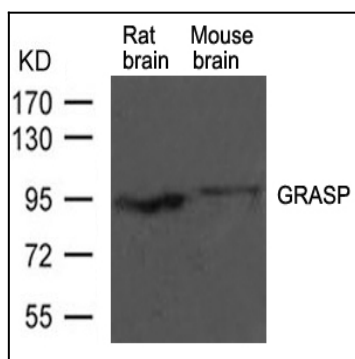


Figure 1: Western blot analysis of extracts from rat brain and mouse brain tissue using GRASP Antibody 35-1692