

## 35-1685: Polyclonal Antibody to FLI1

<b>Clonality :</b>	Polyclonal
<b>Application :</b>	WB
<b>Reactivity :</b>	Human
<b>Gene :</b>	FLI1
<b>Gene ID :</b>	2313
<b>Uniprot ID :</b>	Q01543
<b>Format :</b>	Purified
<b>Alternative Name :</b>	EWSR2, SIC-1
<b>Isotype :</b>	Rabbit IgG
<b>Immunogen Information :</b>	Peptide sequence around aa.251~255(S-K-N-T-E)derived from Human FLI1.

### Description

Sequence-specific transcriptional activator. Recognizes the DNA sequence 5'-C[CA]GGAAGT-3'.

### Product Info

<b>Amount :</b>	50 µl / 100 µl
<b>Content :</b>	Supplied at 1.0mg/mL in phosphate buffered saline (without Mg <sup>2+</sup> and Ca <sup>2+</sup> ), pH 7.4, 150mM NaCl, 0.02% sodium azide and 50% glycerol.
<b>Storage condition :</b>	Store the antibody at 4°C, stable for 6 months. For long-term storage, store at -20°C. Avoid repeated freeze and thaw cycles.

### Application Note

Predicted MW: 51kd, Western blotting: 1:500~1:1000

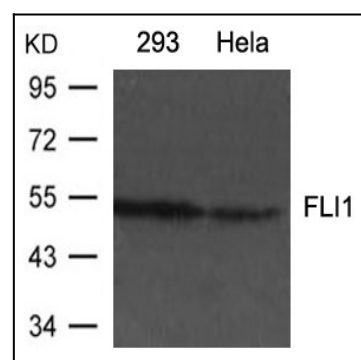


Figure 1: Western blot analysis of extracts from 293 and HeLa cells using FLI1 Antibody 35-1685 .