

35-1682: Polyclonal Antibody to ASPSCR1

Clonality :	Polyclonal
Application :	WB
Reactivity :	Human
Gene :	ASPSCR1
Gene ID :	79058
Uniprot ID :	Q9BZE9
Format :	Purified
Alternative Name :	ASPL, RCC17, TUG, UBXD9, UBXN9
Isotype :	Rabbit IgG
Immunogen Information :	Peptide sequence around aa.303 ~307(P-Q-Q-E-Q) derived from Human ASPSCR1.

Description

Tug (Tether containing UBX domain for GLUT4), also known as ASPL, ASPSCR1, RCC17, UBXD9, UBXN9, was first identified as a chromosomal translocation partner for TFE3 in patients with Alveolar soft part sarcoma and contains an UBX-like domain in its C-terminal region. Tug is found to tether GLUT4 in intracellular vesicles and to release GLUT4 for cell surface translocation upon insulin stimulation. Stable Tug depletion or expression of a dominant negative form stimulates GLUT4 redistribution.

Product Info

Amount :	50 µl / 100 µl
Content :	Supplied at 1.0mg/mL in phosphate buffered saline (without Mg ²⁺ and Ca ²⁺), pH 7.4, 150mM NaCl, 0.02% sodium azide and 50% glycerol.
Storage condition :	Store the antibody at 4°C, stable for 6 months. For long-term storage, store at -20°C. Avoid repeated freeze and thaw cycles.

Application Note

Predicted MW: 70-75kd, Western blotting: 1:500~1:1000

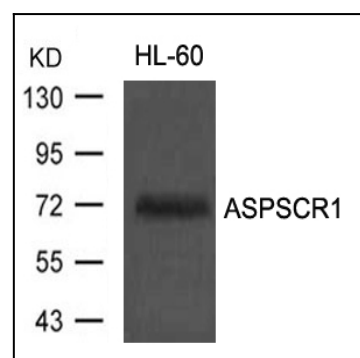


Figure 1: Western blot analysis of extracts from HL60 cells using ASPSCR1 Antibody 35-1682 .