

35-1669: Polyclonal Antibody to BMAL1

| | |
|--------------------------------|--|
| Clonality : | Polyclonal |
| Application : | WB |
| Reactivity : | Human,Mouse,Rat |
| Gene : | ARNTL |
| Gene ID : | 406 |
| Uniprot ID : | O00327 |
| Format : | Purified |
| Alternative Name : | MOP3, BMAL1c, ARNTL, TIC |
| Isotype : | Rabbit IgG |
| Immunogen Information : | Peptide sequence around aa.569~573 (S-S-S-I-L) derived from Human BMAL1. |

Description

ARNTL-CLOCK heterodimers activate E-box element (3'-CACGTG-5') transcription of a number of proteins of the circadian clock. This transcription is inhibited in a feedback loop by PER, and also by CRY proteins Lee S,et al. (2010) PLoS One.5(6):e10995. Wang J,et al. (2010) Biosystems.101(2):136-43. Jung-Hynes ,et al. (2010) J Pineal Res.49(1):60-8.

Product Info

| | |
|----------------------------|--|
| Amount : | 50 μ l / 100 μ l |
| Content : | Supplied at 1.0mg/mL in phosphate buffered saline (without Mg ²⁺ and Ca ²⁺), pH 7.4, 150mM NaCl, 0.02% sodium azide and 50% glycerol. |
| Storage condition : | Store the antibody at 4°C, stable for 6 months. For long-term storage, store at -20°C. Avoid repeated freeze and thaw cycles. |

Application Note

Predicted MW: 69kd, Western blotting: 1:500~1:1000

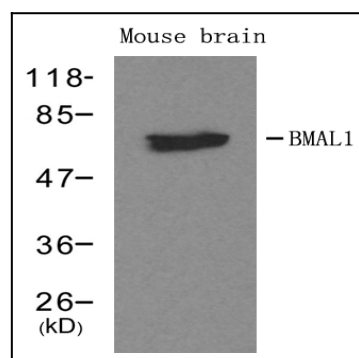


Figure 1: Western blot analysis of extracts from mouse brain tissue using BMAL1 Antibody 35-1669 .

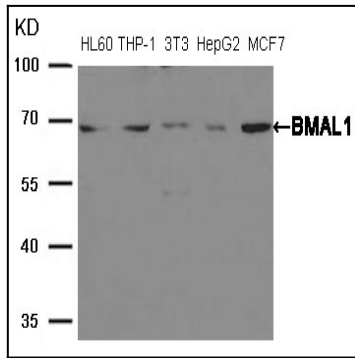


Figure 2: Western blot analysis of extracts from HL60, THP-1, 3T3, HepG2 and MCF7 cells using BMAL1 Antibody 35-1669 .