

35-1668: Polyclonal Antibody to CRY1

Clonality :	Polyclonal
Application :	WB
Reactivity :	Mouse
Gene :	CRY1
Gene ID :	1407
Uniprot ID :	Q16526
Format :	Purified
Alternative Name :	PHLL1
Isotype :	Rabbit IgG
Immunogen Information :	Peptide sequence around aa.551~555 (S-Q-G-S-G) derived from Human CRY1.

Description

Blue light-dependent regulator of the circadian feedback loop. Inhibits CLOCK|NPAS2-ARNTL E box-mediated transcription. Acts, in conjunction with CRY2, in maintaining period length and circadian rhythmicity. Has no photolyase activity. Capable of translocating circadian clock core proteins such as PER proteins to the nucleus. May inhibit CLOCK|NPAS2-ARNTL transcriptional activity through stabilizing the unphosphorylated form of ARNTL Morioka N,et al. (2010) J Pharmacol Sci.113(3):234-45. Fonseca F,et al. (2010) Mol Diagn Ther.14(3):171-8. Stratmann M,et al.(2010) Genes Dev.24(12):1317-28.

Product Info

Amount :	50 µl / 100 µl
Content :	Supplied at 1.0mg/mL in phosphate buffered saline (without Mg ²⁺ and Ca ²⁺), pH 7.4, 150mM NaCl, 0.02% sodium azide and 50% glycerol.
Storage condition :	Store the antibody at 4°C, stable for 6 months. For long-term storage, store at -20°C. Avoid repeated freeze and thaw cycles.

Application Note

Predicted MW: 60kd, Western blotting: 1:500~1:1000

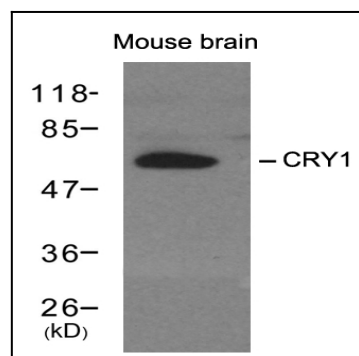


Figure 1: Western blot analysis of extracts from mouse brain tissue using CRY1 Antibody 35-1668 .

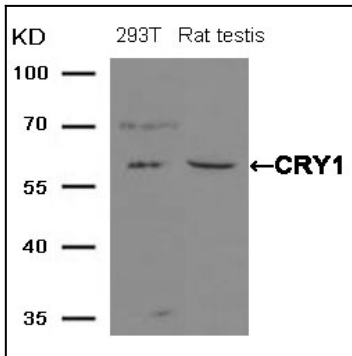


Figure 2: Western blot analysis of extracts from 293T cells and Rat testis tissue using CRY1 Antibody 35-1668 .