

35-1667: Polyclonal Antibody to Zinc finger CCHC domain-containing protein 10

Clonality :	Polyclonal
Application :	WB,IHC,IF
Reactivity :	Human
Gene :	Zcchc10
Gene ID :	360524
Uniprot ID :	Q5EB97
Format :	Purified
Alternative Name :	ZCCHC10, FLJ20094
Isotype :	Rabbit IgG
Immunogen Information :	Peptide sequence around aa.10~14 (A-R-R-Q-A) derived from Human Zinc finger CCHC domain-containing protein 10.

Description

A member of the family of Zcchc (zinc-finger, CCHC domain-containing protein) proteins. Zcchc contains RNA-interacting motifs, and has been implicated in signalling pathways involved in cytokine expression.

Product Info

Amount :	50 µl / 100 µl
Content :	Supplied at 1.0mg/mL in phosphate buffered saline (without Mg ²⁺ and Ca ²⁺), pH 7.4, 150mM NaCl, 0.02% sodium azide and 50% glycerol.
Storage condition :	Store the antibody at 4°C, stable for 6 months. For long-term storage, store at -20°C. Avoid repeated freeze and thaw cycles.

Application Note

Predicted MW: 20kd, Western blotting: 1:500~1:1000

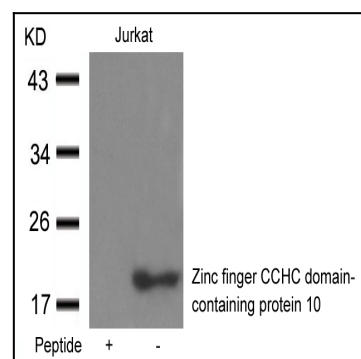


Figure 1: Western blot analysis of extracts from Jurkat cells using Zinc finger CCHC domain-containing protein 10 Antibody 35-1667 and the same antibody preincubated with blocking peptide.