

35-1664: Polyclonal Antibody to VEGFR-3

Clonality :	Polyclonal
Application :	WB,IHC,IF
Reactivity :	Human
Gene :	FLT4
Gene ID :	2324
Uniprot ID :	P35916
Format :	Purified
Alternative Name :	PCL, FLT4, FLT41, LMPH1A
Isotype :	Rabbit IgG
Immunogen Information :	Peptide sequence around aa.1279~1283 (L-A-S-E-E) derived from Human VEGFR-3.

Description

Tyrosine-protein kinase that acts as a cell-surface receptor for VEGFC and VEGFD, and plays an essential role in adult lymphangiogenesis and in the development of the vascular network and the cardiovascular system during embryonic development. Promotes proliferation, survival and migration of endothelial cells, and regulates angiogenic sprouting. Signaling by activated FLT4 leads to enhanced production of VEGFC, and to a lesser degree VEGFA, thereby creating a positive feedback loop that enhances FLT4 signaling. Modulates KDR signaling by forming heterodimers. The secreted isoform 3 may function as a decoy receptor for VEGFC and/or VEGFD and play an important role as a negative regulator of VEGFC-mediated lymphangiogenesis and angiogenesis. Binding of vascular growth factors to isoform 1 or isoform 2 leads to the activation of several signaling cascades; isoform 2 seems to be less efficient in signal transduction, because it has a truncated C-terminus and therefore lacks several phosphorylation sites. Mediates activation of the MAPK1/ERK2, MAPK3/ERK1 signaling pathway, of MAPK8 and the JUN signaling pathway, and of the AKT1 signaling pathway. Phosphorylates SHC1. Mediates phosphorylation of PIK3R1, the regulatory subunit of phosphatidylinositol 3-kinase. Promotes phosphorylation of MAPK8 at 'Thr-183' and 'Tyr-185', and of AKT1 at 'Ser-473'.

Product Info

Amount :	50 µl / 100 µl
Content :	Supplied at 1.0mg/mL in phosphate buffered saline (without Mg ²⁺ and Ca ²⁺), pH 7.4, 150mM NaCl, 0.02% sodium azide and 50% glycerol.
Storage condition :	Store the antibody at 4°C, stable for 6 months. For long-term storage, store at -20°C. Avoid repeated freeze and thaw cycles.

Application Note

Predicted MW: 160kd, Western blotting: 1:500~1:1000

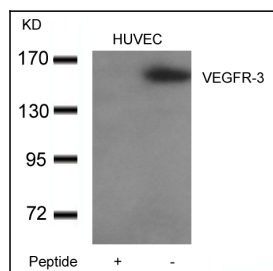


Figure 1: Western blot analysis of extracts from HUVEC cells using VEGFR-3 Antibody 35-1664 (right) and the same antibody preincubated with blocking peptide 61410 (left).

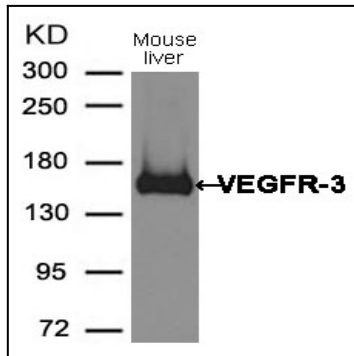


Figure 2: Western blot analysis of extracts from Mouse liver tissue using VEGFR-3 Antibody 35-1664 .