

35-1662: Polyclonal Antibody to Melanoma-associated antigen D1

Clonality :	Polyclonal
Application :	WB
Reactivity :	Human,Mouse,Rat
Gene :	Maged1
Gene ID :	94275
Uniprot ID :	Q9QYH6
Format :	Purified
Alternative Name :	MAGED1
Isotype :	Rabbit IgG
Immunogen Information :	Peptide with sequence C-EAEARAEARNRMGIGDE derived from Mouse Melanoma-associated antigen D1.

Description

Involved in the apoptotic response after nerve growth factor (NGF) binding in neuronal cells. Binds p75NTR and antagonizes its association with TrkA, inhibits cell cycle progression, and facilitates p75NTR-mediated apoptosis. May act as a regulator of the function of DLX family members. May regulate p53 transcriptional activity and inhibit cell proliferation. Enhances p53 phosphorylation and accumulation. Zhao Z,et al.(2002) Sci China C Life Sci.45(4):412-20. Shen WG,et al.(2007) Cell Commun Adhes.14(1):21-31. Cheresch DA,et al. (1984) J Biol Chem.259(12):7453-9.

Product Info

Amount :	50 µl / 100 µl
Content :	Supplied at 1.0mg/mL in phosphate buffered saline (without Mg2+ and Ca2+), pH 7.4, 150mM NaCl, 0.02% sodium azide and 50% glycerol.
Storage condition :	Store the antibody at 4°C, stable for 6 months. For long-term storage, store at -20°C. Avoid repeated freeze and thaw cycles.

Application Note

Predicted MW: 95kd, Western blotting: 1:500~1:1000

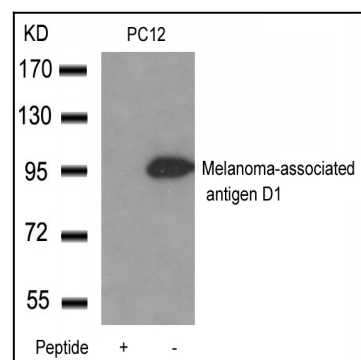


Figure 1: Western blot analysis of extracts from PC12 cells using Melanoma-associated antigen D1 Antibody 35-1662 and the same antibody preincubated with blocking peptide.