

35-1660: Polyclonal Antibody to PP2A-alpha

Clonality :	Polyclonal
Application :	WB
Reactivity :	Human,Mouse,Rat
Gene :	PPP2CA
Gene ID :	5515
Uniprot ID :	P67775
Format :	Purified
Alternative Name :	PR52A, PR55A, B55A, B55ALPHA
Isotype :	Rabbit IgG
Immunogen Information :	Peptide Corresponding to the amino terminal sequence derived from human PP2A-alpha.

Description

The B regulatory subunit might modulate substrate selectivity and catalytic activity, and also might direct the localization of the catalytic enzyme to a particular subcellular compartment. Yu, X.X. et al. (2001) Mol. Biol. Cell 12, 185-199. Tolstyk, T. et al. (2000) EMBO J. 19, 5682-5691. Janssens, V. and Goris, J. (2001) Biochem. J. 353, 417-439.

Product Info

Amount :	50 µl / 100 µl
Content :	Supplied at 1.0mg/mL in phosphate buffered saline (without Mg ²⁺ and Ca ²⁺), pH 7.4, 150mM NaCl, 0.02% sodium azide and 50% glycerol.
Storage condition :	Store the antibody at 4°C, stable for 6 months. For long-term storage, store at -20°C. Avoid repeated freeze and thaw cycles.

Application Note

Predicted MW: 40kd, Western blotting: 1:500~1:1000

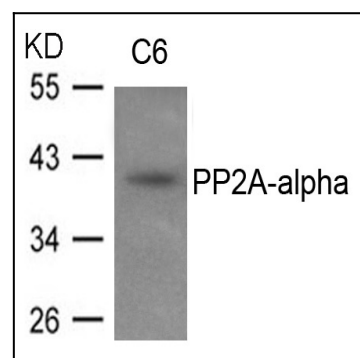


Figure 1: Western blot analysis of extracts from C6 cells using PP2A-alpha Antibody 35-1660 .

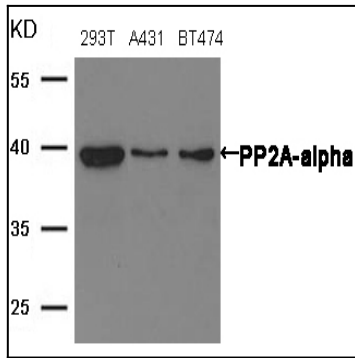


Figure 2: Western blot analysis of extracts from 293T, A431 and BT474 cells using PP2A-alpha Antibody 35-1660 .