

35-1659: Polyclonal Antibody to TRPC6

Clonality :	Polyclonal
Application :	WB
Reactivity :	Human,Mouse,Rat
Gene :	Trpc6
Gene ID :	22068
Uniprot ID :	Q61143
Format :	Purified
Alternative Name :	TRP6, FSGS2, FLJ11098
Isotype :	Rabbit IgG
Immunogen Information :	peptide Corresponding to the amino terminal sequence derived from mouse TRPC6.

Description

The protein encoded by this gene forms a receptor-activated calcium channel in the cell membrane. The channel is activated by diacylglycerol and is thought to be under the control of a phosphatidylinositol second messenger system. Activation of this channel occurs independently of protein kinase C and is not triggered by low levels of intracellular calcium. Defects in this gene are a cause of focal segmental glomerulosclerosis 2 (FSGS2).

Product Info

Amount :	50 μ l / 100 μ l
Content :	Supplied at 1.0mg/mL in phosphate buffered saline (without Mg ²⁺ and Ca ²⁺), pH 7.4, 150mM NaCl, 0.02% sodium azide and 50% glycerol.
Storage condition :	Store the antibody at 4°C, stable for 6 months. For long-term storage, store at -20°C. Avoid repeated freeze and thaw cycles.

Application Note

Predicted MW: 100kd, Western blotting: 1:500~1:1000

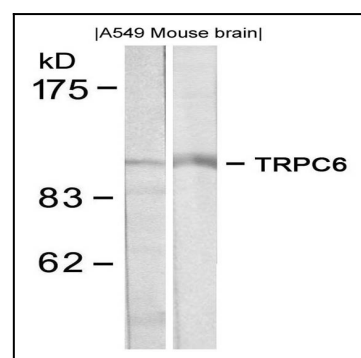


Figure 1: Western blot analysis of extracts from A549 and mouse brain tissue using TRPC6 Antibody 35-1659 .