

## 35-1658: Polyclonal Antibody to LC3A

<b>Clonality :</b>	Polyclonal
<b>Application :</b>	WB,IF
<b>Reactivity :</b>	Human,Mouse,Rat
<b>Gene :</b>	MAP1LC3A
<b>Gene ID :</b>	84557
<b>Uniprot ID :</b>	Q9H492
<b>Format :</b>	Purified
<b>Alternative Name :</b>	Microtubule-associated protein 1 light chain 3 alpha, MAP1A/1B light chain 3 A, MAP1A/MAP1B LC3 A, MAP1 light chain 3-like protein 1, Autophagy-related protein LC3 A
<b>Isotype :</b>	Rabbit IgG
<b>Immunogen Information :</b>	Peptide sequence around aa.5~10 (R-P-F-K-Q) derived from Human LC3A.

### Description

Probably involved in formation of autophagosomal vacuoles (autophagosomes).

### Product Info

<b>Amount :</b>	50 $\mu$ l / 100 $\mu$ l
<b>Content :</b>	Supplied at 1.0mg/mL in phosphate buffered saline (without Mg <sup>2+</sup> and Ca <sup>2+</sup> ), pH 7.4, 150mM NaCl, 0.02% sodium azide and 50% glycerol.
<b>Storage condition :</b>	Store the antibody at 4°C, stable for 6 months. For long-term storage, store at -20°C. Avoid repeated freeze and thaw cycles.

### Application Note

Predicted MW: 18 16 kd, Western blotting: 1:500~1:1000, Immunofluorescence: 1:100~1:200

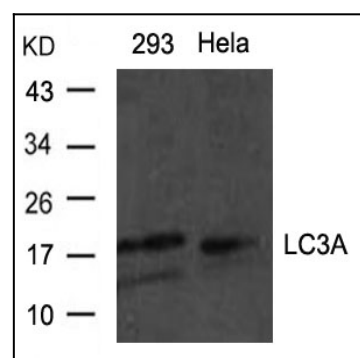


Figure 1: Western blot analysis of extracts from HeLa and 293 cells using LC3A Antibody 35-1658 .

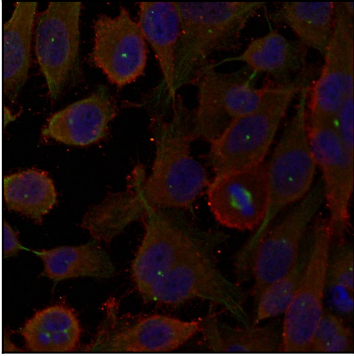


Figure 2: Immunofluorescence staining of methanol-fixed HeLa cells using LC3A Antibody 35-1658 .