

## 35-1657: Polyclonal Antibody to Niban

<b>Clonality :</b>	Polyclonal
<b>Application :</b>	WB,IF
<b>Reactivity :</b>	Human
<b>Gene :</b>	FAM129A
<b>Gene ID :</b>	116496
<b>Uniprot ID :</b>	Q9BZQ8
<b>Format :</b>	Purified
<b>Alternative Name :</b>	FAM129A
<b>Isotype :</b>	Rabbit IgG
<b>Immunogen Information :</b>	peptide sequence around aa. 912~916 (K-E-G-E-G) derived from Human Niban.

### Description

Regulates phosphorylation of a number of proteins involved in translation regulation including EIF2A, EIF4EBP1 and RPS6KB1. May be involved in the endoplasmic reticulum stress response

### Product Info

<b>Amount :</b>	50 µl / 100 µl
<b>Content :</b>	Supplied at 1.0mg/mL in phosphate buffered saline (without Mg <sup>2+</sup> and Ca <sup>2+</sup> ), pH 7.4, 150mM NaCl, 0.02% sodium azide and 50% glycerol.
<b>Storage condition :</b>	Store the antibody at 4°C, stable for 6 months. For long-term storage, store at -20°C. Avoid repeated freeze and thaw cycles.

### Application Note

Predicted MW: 150kd, Western blotting: 1:500~1:1000, Immunofluorescence: 1:100~1:200

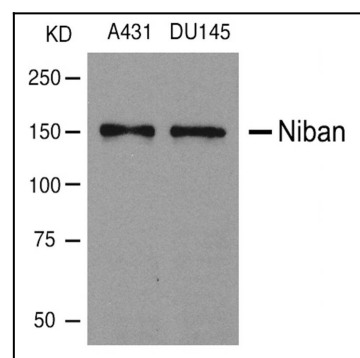


Figure 1: Western blot analysis of extracts from A431 and DU145 cells using Niban Antibody 35-1657 .

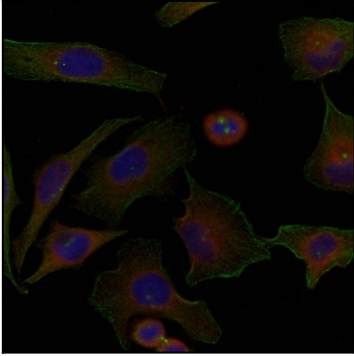


Figure 2: Immunofluorescence staining of methanol-fixed HeLa cells using Niban Antibody 35-1657 .