

## 35-1654: Polyclonal Antibody to beta-actin

<b>Clonality :</b>	Polyclonal
<b>Application :</b>	WB
<b>Reactivity :</b>	Rat,Mouse,Human
<b>Gene :</b>	ACTB
<b>Gene ID :</b>	60
<b>Uniprot ID :</b>	P60709
<b>Format :</b>	Purified
<b>Alternative Name :</b>	BRWS1,PS1TP5BP1
<b>Isotype :</b>	Rabbit IgG
<b>Immunogen Information :</b>	Peptide sequence around aa.6-10(A-A-L-V-V)derived from Human beta-actin.

### Description

Actins are highly conserved proteins that are involved in various types of cell motility and are ubiquitously expressed in all eukaryotic cells.

### Product Info

<b>Amount :</b>	50 µl / 100 µl
<b>Content :</b>	Supplied at 1.0mg/mL in phosphate buffered saline (without Mg <sup>2+</sup> and Ca <sup>2+</sup> ), pH 7.4, 150mM NaCl, 0.02% sodium azide and 50% glycerol.
<b>Storage condition :</b>	Store the antibody at 4°C, stable for 6 months. For long-term storage, store at -20°C. Avoid repeated freeze and thaw cycles.

### Application Note

Predict MW: 43kd, Western blotting: 1:500~1:1000

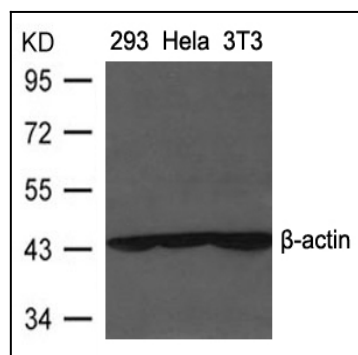


Figure 1: Western blot analysis of extracts from 293, Heia and 3T3 cells using β-actin Antibody 35-1654 .