

35-1653: Polyclonal Antibody to SLK1

Clonality :	Polyclonal
Application :	WB
Reactivity :	Human
Gene :	SLK
Gene ID :	9748
Uniprot ID :	Q9H2G2
Format :	Purified
Alternative Name :	STK2, STE20-like kinase, STE20-like serine/threonine-protein kinase, Serine/threonine-protein kinase 2
Isotype :	Rabbit IgG
Immunogen Information :	Peptide sequence around aa.1187~1191(K-T-L-E-E) derived from Human SLK1.

Description

Mediates apoptosis and actin stress fiber dissolution.

Product Info

Amount :	50 μ l / 100 μ l
Content :	Supplied at 1.0mg/mL in phosphate buffered saline (without Mg ²⁺ and Ca ²⁺), pH 7.4, 150mM NaCl, 0.02% sodium azide and 50% glycerol.
Storage condition :	Store the antibody at 4°C, stable for 6 months. For long-term storage, store at -20°C. Avoid repeated freeze and thaw cycles.

Application Note

Predicted MW: 145kd, Western blotting: 1:500~1:1000

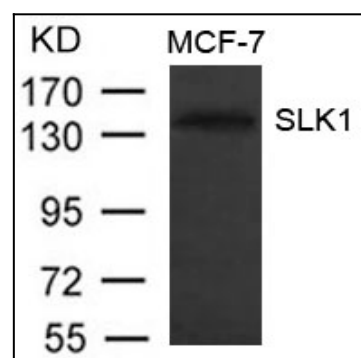


Figure 1: Western blot analysis of extract from MCF-7 cells using SLK1 Antibody 35-1653