

35-1646: Polyclonal Antibody to Smad3 (Ab-425)

Clonality :	Polyclonal
Application :	IHC,IF
Reactivity :	Human,Mouse,Rat
Gene :	SMAD3
Gene ID :	4088
Uniprot ID :	P84022
Format :	Purified
Alternative Name :	JV15-2, MAD-3, MADH3, Mad3, Mothers against DPP homolog 3
Isotype :	Rabbit IgG
Immunogen Information :	Peptide sequence around aa.423~427 (C-S-S-V-S) derived from Human Smad3.

Description

Smad3 encoded by this gene belongs to the SMAD, a family of proteins similar to the gene products of the Drosophila gene 'mothers against decapentaplegic' (Mad) and the C. elegans gene Sma. SMAD proteins are signal transducers and transcriptional modulators that mediate multiple signaling pathways. This protein functions as a transcriptional modulator activated by transforming growth factor-beta and is thought to play a role in the regulation of carcinogenesis.

Product Info

Amount :	50 µl / 100 µl
Content :	Supplied at 1.0mg/mL in phosphate buffered saline (without Mg ²⁺ and Ca ²⁺), pH 7.4, 150mM NaCl, 0.02% sodium azide and 50% glycerol.
Storage condition :	Store the antibody at 4°C, stable for 6 months. For long-term storage, store at -20°C. Avoid repeated freeze and thaw cycles.

Application Note

Predicted MW: 52kd, Immunohistochemistry: 1:50~1:100, Immunofluorescence: 1:100~1:200

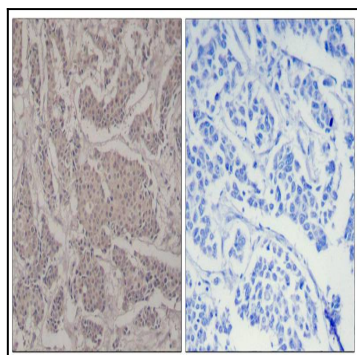


Figure 1: Immunohistochemical analysis of paraffin-embedded human breast carcinoma tissue using Smad3(Ab-425) Antibody 35-1646 (left) or the same antibody preincubated with blocking peptide(right).

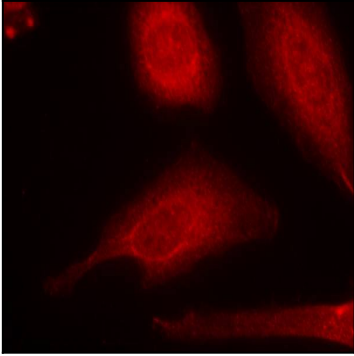


Figure 2: Immunofluorescence staining of methanol-fixed HeLa cells using Smad3(Ab-425) Antibody 35-1646 .