

35-1644: Polyclonal Antibody to Smad2 (Ab-220)

Clonality :	Polyclonal
Application :	WB,IHC
Reactivity :	Human,Mouse,Rat
Gene :	SMAD2
Gene ID :	4087
Uniprot ID :	Q15796
Format :	Purified
Alternative Name :	JV18-1, MADH2, MADR2, Mad-related protein 2, Mothers against DPP homolog 2
Isotype :	Rabbit IgG
Immunogen Information :	Peptide sequence around aa.218~222 (P-E-T-P-P) derived from Human Smad2.

Description

Transcriptional modulator activated by TGF-beta and activin type 1 receptor kinase. SMAD2 is a receptor-regulated SMAD (R-SMAD). May act as a tumor suppressor in colorectal carcinoma.

Product Info

Amount :	50 µl / 100 µl
Content :	Supplied at 1.0mg/mL in phosphate buffered saline (without Mg ²⁺ and Ca ²⁺), pH 7.4, 150mM NaCl, 0.02% sodium azide and 50% glycerol.
Storage condition :	Store the antibody at 4°C, stable for 6 months. For long-term storage, store at -20°C. Avoid repeated freeze and thaw cycles.

Application Note

Predicted MW: 60kd, Western blotting: 1:500~1:1000, Immunohistochemistry: 1:50~1:100

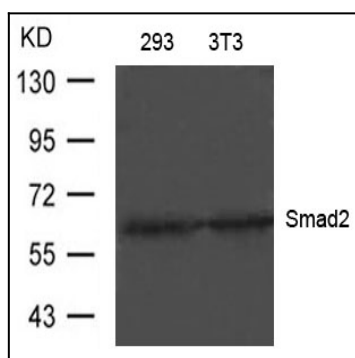


Figure 1: Western blot analysis of extracts from 293 and 3T3 cells using Smad2(Ab-220) Antibody 35-1644

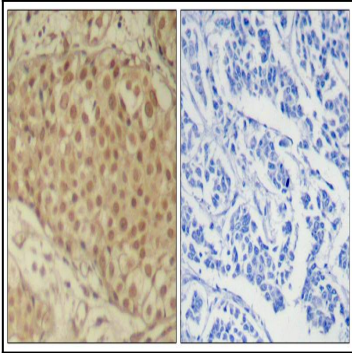


Figure 2: Immunohistochemical analysis of paraffin-embedded human breast carcinoma tissue using Smad2(Ab-220) Antibody 35-1644 (left) or the same antibody preincubated with blocking peptide(right).