

### 35-1643: Polyclonal Antibody to Smad2 (Ab-467)

<b>Clonality :</b>	Polyclonal
<b>Application :</b>	WB,IF
<b>Reactivity :</b>	Human,Mouse,Rat
<b>Gene :</b>	SMAD2
<b>Gene ID :</b>	4087
<b>Uniprot ID :</b>	Q15796
<b>Format :</b>	Purified
<b>Alternative Name :</b>	Mad-related protein 2
<b>Isotype :</b>	Rabbit IgG
<b>Immunogen Information :</b>	Peptide sequence around aa. 463~467 (C-S-S-M-S) derived from Human Smad2.

#### Description

Transcriptional modulator activated by TGF-beta and activin type 1 receptor kinase. SMAD2 is a receptor-regulated SMAD (R-SMAD). May act as a tumor suppressor in colorectal carcinoma.

#### Product Info

<b>Amount :</b>	50 µl / 100 µl
<b>Content :</b>	Supplied at 1.0mg/mL in phosphate buffered saline (without Mg <sup>2+</sup> and Ca <sup>2+</sup> ), pH 7.4, 150mM NaCl, 0.02% sodium azide and 50% glycerol.
<b>Storage condition :</b>	Store the antibody at 4°C, stable for 6 months. For long-term storage, store at -20°C. Avoid repeated freeze and thaw cycles.

#### Application Note

Predicted MW: 60kd, Western blotting: 1:500~1:1000, Immunofluorescence: 1:100~1:200

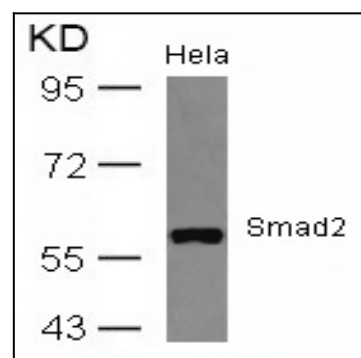


Figure 1: Western blot analysis of extracts from HeLa cells using Smad2(Ab-467) Antibody 35-1643 .

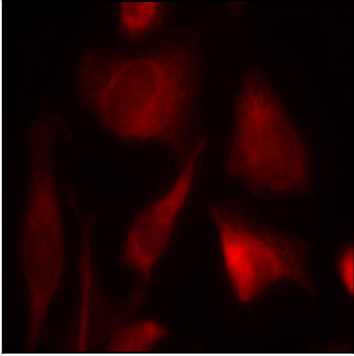


Figure 2: Immunofluorescence staining of methanol-fixed HeLa cells using Smad2(Ab-467) Antibody 35-1643 .