

35-1642: Polyclonal Antibody to Smad1 (Ab-465)

Clonality :	Polyclonal
Application :	WB,IF
Reactivity :	Human,Mouse,Rat
Gene :	SMAD1
Gene ID :	4086
Uniprot ID :	Q15797
Format :	Purified
Alternative Name :	Mad-related protein 1, SMAD 1, hSMAD1, Transforming growth factor-beta-signaling protein 1
Isotype :	Rabbit IgG
Immunogen Information :	Peptide sequence around aa. 461~465 (I-S-S-V-S) derived from Human Smad1.

Description

Transcriptional modulator activated by BMP (bone morphogenetic proteins) type 1 receptor kinase. SMAD1 is a receptor-regulated SMAD (R-SMAD).

Product Info

Amount :	50 µl / 100 µl
Content :	Supplied at 1.0mg/mL in phosphate buffered saline (without Mg ²⁺ and Ca ²⁺), pH 7.4, 150mM NaCl, 0.02% sodium azide and 50% glycerol.
Storage condition :	Store the antibody at 4°C, stable for 6 months. For long-term storage, store at -20°C. Avoid repeated freeze and thaw cycles.

Application Note

Predicted MW: 55kd, Western blotting: 1:500~1:1000, Immunofluorescence: 1:100~1:200

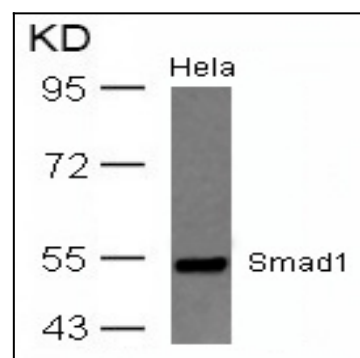


Figure 1: Western blot analysis of extracts from HeLa cells using Smad1(Ab-465) Antibody 35-1642 .

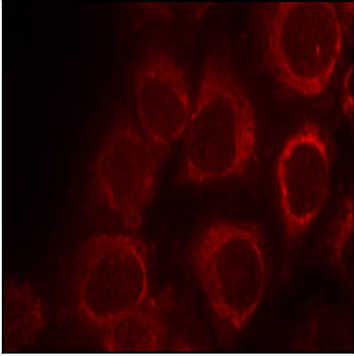


Figure 2: Immunofluorescence staining of methanol-fixed HeLa cells using Smad1(Ab-465) Antibody 35-1642 .