

35-1641: Polyclonal Antibody to SHP-2 (Ab-580)

Clonality :	Polyclonal
Application :	IHC,WB,IF
Reactivity :	Rat,Mouse,Human
Gene :	PTPN11
Gene ID :	5781
Uniprot ID :	Q06124
Format :	Purified
Alternative Name :	Protein-tyrosine phosphatase 2C
Isotype :	Rabbit IgG
Immunogen Information :	Peptide sequence around aa.578~582 (R-V-Y-E-N) derived from Human SHP-2.

Description

Acts downstream of various receptor and cytoplasmic protein tyrosine kinases to participate in the signal transduction from the cell surface to the nucleus.

Product Info

Amount :	50 μ l / 100 μ l
Content :	Supplied at 1.0mg/mL in phosphate buffered saline (without Mg ²⁺ and Ca ²⁺), pH 7.4, 150mM NaCl, 0.02% sodium azide and 50% glycerol.
Storage condition :	Store the antibody at 4°C, stable for 6 months. For long-term storage, store at -20°C. Avoid repeated freeze and thaw cycles.

Application Note

Predicted MW: 72kd, Western blotting: 1:500~1:1000, Immunohistochemistry: 1:50~1:100, Immunofluorescence: 1:100~1:200

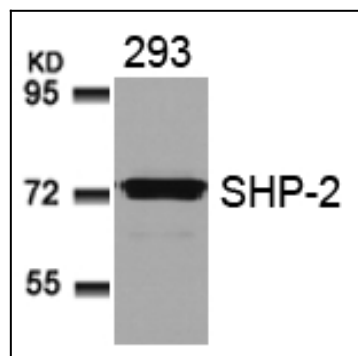


Figure 1: Western blot analysis of extracts from 293 cells using SHP-2(Ab-580) Antibody 35-1641 .

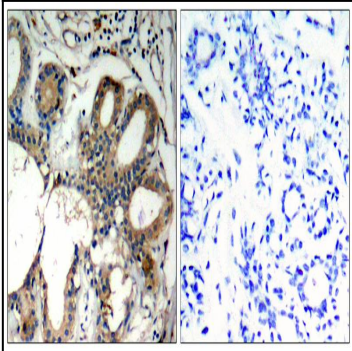


Figure 2: Immunohistochemical analysis of paraffin-embedded human breast carcinoma tissue using SHP-2(Ab-580) Antibody 35-1641 (left) or the same antibody preincubated with blocking peptide(right).

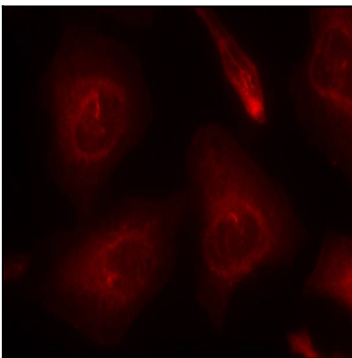


Figure 3: Immunofluorescence staining of methanol-fixed HeLa cells using SHP-2(Ab-580) Antibody 35-1641 .