

35-1640: Polyclonal Antibody to SHP-2 (Ab-542)

Clonality :	Polyclonal
Application :	IHC,WB,IF
Reactivity :	Rat,Mouse,Human
Gene :	PTPN11
Gene ID :	5781
Uniprot ID :	Q06124
Format :	Purified
Alternative Name :	Protein-tyrosine phosphatase 2C
Isotype :	Rabbit IgG
Immunogen Information :	Peptide sequence around aa. 540~544 (H-E-Y-T-N) derived from Human SHP-2.

Description

Acts downstream of various receptor and cytoplasmic protein tyrosine kinases to participate in the signal transduction from the cell surface to the nucleus. Ferjoux G, et al. (2003) Mol Biol Cell. 2003; 14(9): 3911-3928. Shi ZQ, et al. (2000) Mol Cell Biol ; 20(5): 1526-1536. Li C, Friedman JM. (1999) Proc Natl Acad Sci U S A ; 96(17): 9677-9682 Manes S, et al. (1999) Mol Cell Biol ; 19(4): 3125-3135. Oh ES, et al. (1999) Mol Cell Biol; 19(4): 3205-3215.

Product Info

Amount :	50 µl / 100 µl
Content :	Supplied at 1.0mg/mL in phosphate buffered saline (without Mg ²⁺ and Ca ²⁺), pH 7.4, 150mM NaCl, 0.02% sodium azide and 50% glycerol.
Storage condition :	Store the antibody at 4°C, stable for 6 months. For long-term storage, store at -20°C. Avoid repeated freeze and thaw cycles.

Application Note

Predicted MW: 72kd, Western blotting: 1:500~1:1000, Immunohistochemistry: 1:50~1:100, Immunofluorescence: 1:100~1:200

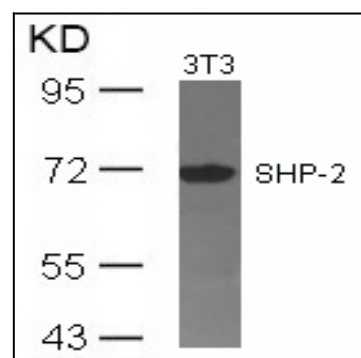


Figure 1: Western blot analysis of extracts from 3T3 cells using SHP-2(Ab-542) Antibody 35-1640 .

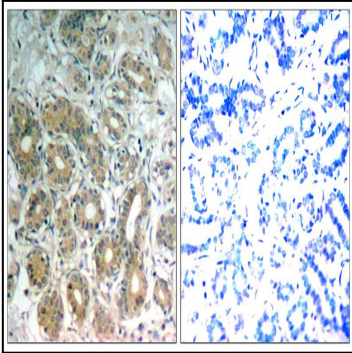


Figure 2: Immunohistochemical analysis of paraffin-embedded human breast carcinoma tissue using SHP-2(Ab-542) Antibody 35-1640 (left) or the same antibody preincubated with blocking peptide(right).

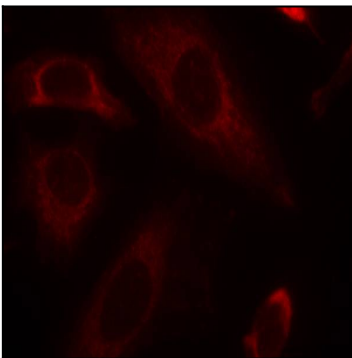


Figure 3: Immunofluorescence staining of methanol-fixed HeLa cells using SHP-2(Ab-542) Antibody 35-1640 .