

35-1639: Polyclonal Antibody to SHP-1 (Ab-536)

Clonality :	Polyclonal
Application :	IHC,WB,IF
Reactivity :	Mouse,Human
Gene :	PTPN6
Gene ID :	5777
Uniprot ID :	P29350
Format :	Purified
Alternative Name :	70Z-SHP, EC 3.1.3.48, HCP, HCPH, Hematopoietic cell protein-tyrosine phosphatase
Isotype :	Rabbit IgG
Immunogen Information :	Peptide sequence around aa.534~538 (S-E-Y-G-N) derived from Human SHP-1.

Description

Acts downstream of various receptor and cytoplasmic protein tyrosine kinases to participate in the signal transduction from the cell surface to the nucleus.

Product Info

Amount :	50 μ l / 100 μ l
Content :	Supplied at 1.0mg/mL in phosphate buffered saline (without Mg ²⁺ and Ca ²⁺), pH 7.4, 150mM NaCl, 0.02% sodium azide and 50% glycerol.
Storage condition :	Store the antibody at 4°C, stable for 6 months. For long-term storage, store at -20°C. Avoid repeated freeze and thaw cycles.

Application Note

Predicted MW: 68kd, Western blotting: 1:500~1:1000, Immunohistochemistry: 1:50~1:100, Immunofluorescence: 1:100~1:200

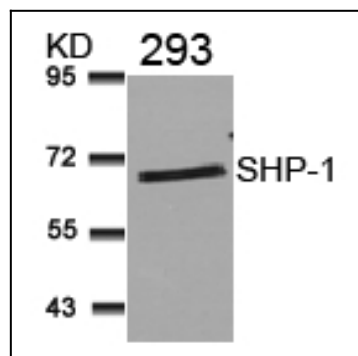


Figure 1: Western blot analysis of extracts from 293 cells using SHP-1(Ab-536) Antibody 35-1639 .

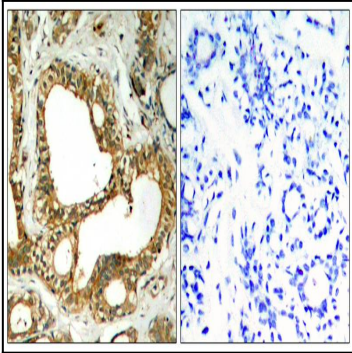


Figure 2: Immunohistochemical analysis of paraffin-embedded human breast carcinoma tissue using SHP-1(Ab-536) Antibody 35-1639 (left) or the same antibody preincubated with blocking peptide(right).

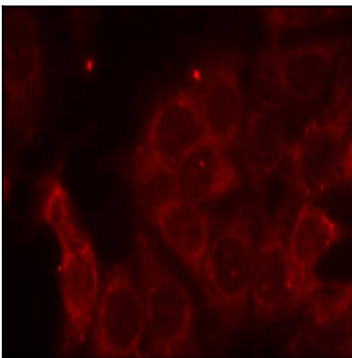


Figure 3: Immunofluorescence staining of methanol-fixed MCF cells using SHP-1(Ab-536) Antibody 35-1639 .