

35-1636: Polyclonal Antibody to PKC Zeta (Ab-410)

Clonality :	Polyclonal
Application :	WB,IHC
Reactivity :	Human,Mouse,Rat
Gene :	PRKCZ
Gene ID :	5590
Uniprot ID :	Q05513
Format :	Purified
Alternative Name :	PKC2, PKC-ZETA, PRKCZ
Isotype :	Rabbit IgG
Immunogen Information :	Peptide sequence around aa. 408~412 (T-S-T-F-C) derived from PKCz

Description

This is a calcium-independent, phospholipid-dependent, serine- and threonine-specific enzyme. PKC is activated by diacylglycerol which in turn phosphorylates a range of cellular proteins. PKC also serves as the receptor for phorbol esters, a class of tumor promoters. Subunit of a quaternary complex that plays a central role in epithelial cell polarization.

Product Info

Amount :	50 µl / 100 µl
Content :	Supplied at 1.0mg/mL in phosphate buffered saline (without Mg ²⁺ and Ca ²⁺), pH 7.4, 150mM NaCl, 0.02% sodium azide and 50% glycerol.
Storage condition :	Store the antibody at 4°C, stable for 6 months. For long-term storage, store at -20°C. Avoid repeated freeze and thaw cycles.

Application Note

Predicted MW: 78kd, Western blotting: 1:500~1:1000, Immunohistochemistry: 1:50~1:100

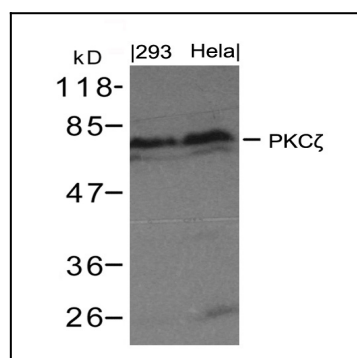


Figure 1: Western blot analysis of extract from 293 cells and HeLa using PKCz(Ab-410) Antibody 35-1636 .

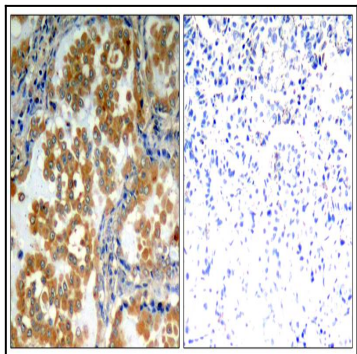


Figure 2: Immunohistochemical analysis of paraffin-embedded human lung carcinoma tissue using PKCz(Ab-410) antibody(35-1636).