

35-1634: Polyclonal Antibody to NFκB-p105/p50 (Ab-927)

Clonality :	Polyclonal
Application :	WB,IF
Reactivity :	Human,Mouse,Rat
Gene :	NF-κB1
Gene ID :	4790
Uniprot ID :	P19838
Format :	Purified
Alternative Name :	DNA-binding factor KBF1, EBP-1, NF-kappa-B1 p84/NF-kappa-B1 p98, NFKB1, NFκB-p50
Isotype :	Rabbit IgG
Immunogen Information :	Peptide sequence around aa.925~929 (C-D-S-G-V) derived from Human NFκB-p105.

Description

NF-kappa-B is a pleiotropic transcription factor which is present in almost all cell types and is involved in many biological processes such as inflammation, immunity, differentiation, cell growth, tumorigenesis and apoptosis. NF-kappa-B is a homo- or heterodimeric complex formed by the Rel-like domain-containing proteins RELA/p65, RELB, NFKB1/p105, NFKB1/p50, REL and NFKB2/p52. The dimers bind at kappa-B sites in the DNA of their target genes and the individual dimers have distinct preferences for different kappa-B sites that they can bind with distinguishable affinity and specificity. Different dimer combinations act as transcriptional activators or repressors, respectively. Hou S, et al. (2003) J Biol Chem. 278(46): 45994-45998. Baeuerle P A, et al. (1994) Annu Rev Immunol. 12:141-179. Baeuerle P A, et al. (1996) Cell 87:13-20. Haskill S, et al. (1991) Cell 65:1281-1289.

Product Info

Amount :	50 µl / 100 µl
Content :	Supplied at 1.0mg/mL in phosphate buffered saline (without Mg ²⁺ and Ca ²⁺), pH 7.4, 150mM NaCl, 0.02% sodium azide and 50% glycerol.
Storage condition :	Store the antibody at 4°C, stable for 6 months. For long-term storage, store at -20°C. Avoid repeated freeze and thaw cycles.

Application Note

Predicted MW: 120 kd, Western blotting: 1:500~1:1000, Immunofluorescence: 1:100~1:200

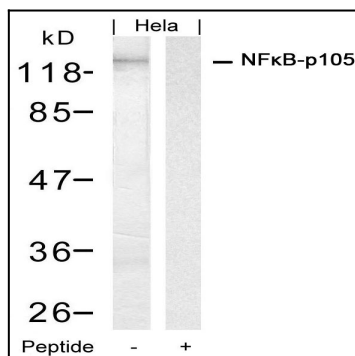


Figure 1: Western blot analysis of extracts from HeLa cells using NFκB-p105(Ab-927) Antibody 35-1634 and the same antibody preincubated with blocking peptide.

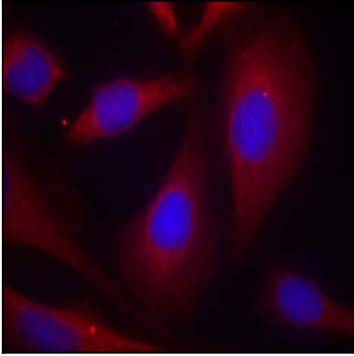


Figure 2: Immunofluorescence staining of methanol-fixed HeLa cells using NFkB-p105(Ab-927) Antibody 35-1634 .