

35-1632: Polyclonal Antibody to Keratin 8 (Ab-74)

Clonality :	Polyclonal
Application :	WB,IHC,IF
Reactivity :	Human
Gene :	KRT8
Gene ID :	3856
Uniprot ID :	P05787
Format :	Purified
Alternative Name :	CK 8, CK8, CYK8, Cytokeratin endo A, K8
Isotype :	Rabbit IgG
Immunogen Information :	Peptide sequence around aa.72~76 (L-L-S-P-L) derived from Human Keratin 8 (CK8).

Description

Keratin 8 is a member of the type II keratin family clustered on the long arm of chromosome 12. Type I and type II keratins heteropolymerize to form intermediate-sized filaments in the cytoplasm of epithelial cells. The product of this gene typically dimerizes with keratin 18 to form an intermediate filament in simple single-layered epithelial cells. This protein plays a role in maintaining cellular structural integrity and also functions in signal transduction and cellular differentiation. Mutations in this gene cause cryptogenic cirrhosis.

Product Info

Amount :	50 μ l / 100 μ l
Content :	Supplied at 1.0mg/mL in phosphate buffered saline (without Mg ²⁺ and Ca ²⁺), pH 7.4, 150mM NaCl, 0.02% sodium azide and 50% glycerol.
Storage condition :	Store the antibody at 4°C, stable for 6 months. For long-term storage, store at -20°C. Avoid repeated freeze and thaw cycles.

Application Note

Predicted MW: 55kd, Western blotting: 1:500~1:1000, Immunohistochemistry: 1:50~1:100, Immunofluorescence: 1:100~1:200

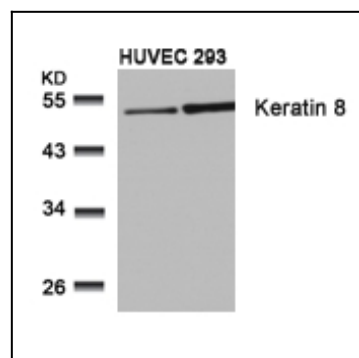


Figure 1: Western blot analysis of extracts from HUVEC and 293 cells using Keratin 8(Ab-74) Antibody 35-1632 .

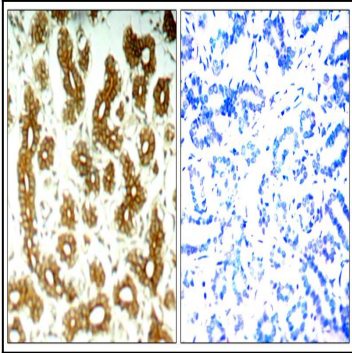


Figure 2: Immunohistochemical analysis of paraffin-embedded human breast carcinoma tissue using Keratin 8(Ab-74) Antibody 35-1632 (left) or the same antibody preincubated with blocking peptide(right).

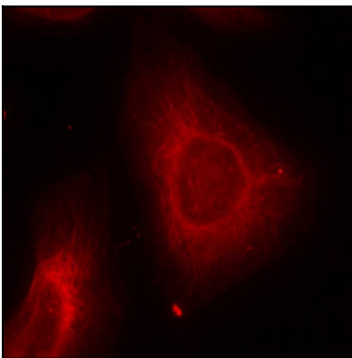


Figure 3: Immunofluorescence staining of methanol-fixed HeLa cells using Keratin 8(Ab-74) Antibody 35-1632 .