

35-1626: Polyclonal Antibody to CREB (Ab-142)

| | |
|--------------------------------|---|
| Clonality : | Polyclonal |
| Application : | IHC |
| Reactivity : | Human,Mouse,Rat |
| Gene : | CREB1 |
| Gene ID : | 1385 |
| Uniprot ID : | P16220 |
| Format : | Purified |
| Alternative Name : | CREB-1, CREB1 |
| Isotype : | Rabbit IgG |
| Immunogen Information : | Peptide sequence around aa.140~144 (D-L-S-S-D) derived from Human CREB. |

Description

This protein binds the cAMP response element (CRE), a sequence present in many viral and cellular promoters. CREB stimulates transcription on binding to the CRE. Transcription activation is enhanced by the TORC coactivators which act independently of Ser-133 phosphorylation. Implicated in synchronization of circadian rhythmicity.

Product Info

| | |
|----------------------------|--|
| Amount : | 50 μ l / 100 μ l |
| Content : | Supplied at 1.0mg/mL in phosphate buffered saline (without Mg ²⁺ and Ca ²⁺), pH 7.4, 150mM NaCl, 0.02% sodium azide and 50% glycerol. |
| Storage condition : | Store the antibody at 4°C, stable for 6 months. For long-term storage, store at -20°C. Avoid repeated freeze and thaw cycles. |

Application Note

Predicted MW: 43kd, Immunohistochemistry: 1:50~1:100

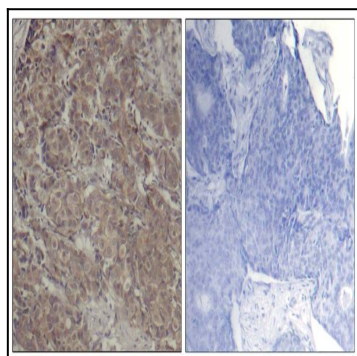


Figure 1: Immunohistochemical analysis of paraffin-embedded human breast carcinoma tissue using CREB(Ab-142) Antibody 35-1626 (left) or the same antibody preincubated with blocking peptide(right).