

35-1625: Polyclonal Antibody to NFkB-p100/p52 (Ab-872)

Clonality :	Polyclonal
Application :	WB,IHC,IF
Reactivity :	Human,Mouse,Rat
Gene :	NF-kB2
Gene ID :	4791
Uniprot ID :	Q00653
Format :	Purified
Alternative Name :	DNA-binding factor KBF2, H2TF1, Lymphocyte translocation chromosome 10, Lym10, NFKB2
Isotype :	Rabbit IgG
Immunogen Information :	Peptide sequence around aa.870~874 (S-Q-S-V-E) derived from Human NFkB-p100.

Description

NF-kappa-B is a pleiotropic transcription factor which is present in almost all cell types and is involved in many biological processes such as inflammation, immunity, differentiation, cell growth, tumorigenesis and apoptosis. NF-kappa-B is a homo- or heterodimeric complex formed by the Rel-like domain-containing proteins RELA/p65, RELB, NFKB1/p105, NFKB1/p50, REL and NFKB2/p52. The dimers bind at kappa-B sites in the DNA of their target genes and the individual dimers have distinct preferences for different kappa-B sites that they can bind with distinguishable affinity and specificity. Different dimer combinations act as transcriptional activators or repressors, respectively. Shin HM, et al. (2006) EMBO J; 25(1): 129-138. Li Q, et al. (2005) Proc Natl Acad Sci USA; 102(35): 12425-12430. Chen C, et al. (2000) Mol Cell Biol; 20(8): 2687-2695.

Product Info

Amount :	50 µl / 100 µl
Content :	Supplied at 1.0mg/mL in phosphate buffered saline (without Mg ²⁺ and Ca ²⁺), pH 7.4, 150mM NaCl, 0.02% sodium azide and 50% glycerol.
Storage condition :	Store the antibody at 4°C, stable for 6 months. For long-term storage, store at -20°C. Avoid repeated freeze and thaw cycles.

Application Note

Predicted MW: 120 kd, Western blotting: 1:500~1:1000, Immunohistochemistry: 1:50~1:100, Immunofluorescence: 1:100~1:200

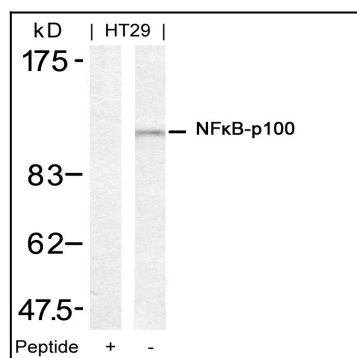


Figure 1: Western blot analysis of extracts from HT29 cells using NFkB-p100(Ab-872) Antibody 35-1625 and the same antibody preincubated with blocking peptide.

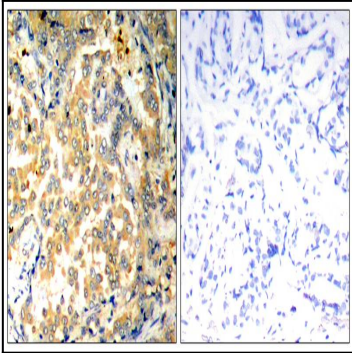


Figure 2: Immunohistochemical analysis of paraffin-embedded human lung carcinoma tissue using NFkB-p100/p52(Ab-872) Antibody 35-1625 (left) or the same antibody preincubated with blocking peptide(right).

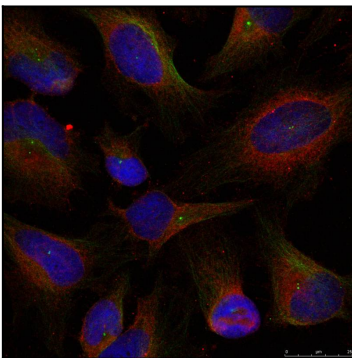


Figure 3: Immunofluorescence staining of methanol-fixed HeLa cells using NFkB-p100(Ab-872) Antibody 35-1625 .