

35-1624: Polyclonal Antibody to IκB-epsilon (Ab-22)

Clonality :	Polyclonal
Application :	WB,IHC
Reactivity :	Human,Mouse,Rat
Gene :	NFKIB1B
Gene ID :	4794
Uniprot ID :	O00221
Format :	Purified
Alternative Name :	I-kappa-B-epsilon
Isotype :	Rabbit IgG
Immunogen Information :	Peptide sequence around aa. 20~24 (I-E-S-L-R) derived from Human IκB-ε.

Description

Inhibits NF-kappa-B by complexing with and trapping it in the cytoplasm. Inhibits DNA-binding of NF-kappa-B p50-p65 and p50-c-Rel complexes.

Product Info

Amount :	50 μl / 100 μl
Content :	Supplied at 1.0mg/mL in phosphate buffered saline (without Mg ²⁺ and Ca ²⁺), pH 7.4, 150mM NaCl, 0.02% sodium azide and 50% glycerol.
Storage condition :	Store the antibody at 4°C, stable for 6 months. For long-term storage, store at -20°C. Avoid repeated freeze and thaw cycles.

Application Note

Predicted MW: 40kd, Western blotting: 1:500~1:1000, Immunohistochemistry: 1:50~1:100

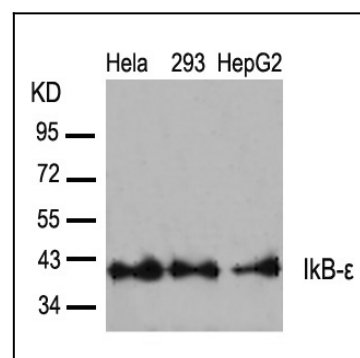


Figure 1: Western blot analysis of extracts from HeLa, 293 and HepG2 cells using IκB-ε(Ab-22) Antibody 35-1624 .

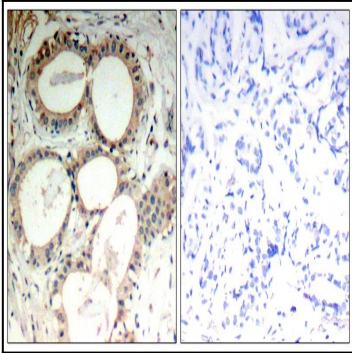


Figure 2: Immunohistochemical analysis of paraffin-embedded human breast carcinoma tissue using IκB-ε(Ab-22) Antibody 35-1624 (left) or the same antibody preincubated with blocking peptide(right).