

## 35-1622: Polyclonal Antibody to Synaptotagmin 1/2 (Ab-202/199)

<b>Clonality :</b>	Polyclonal
<b>Application :</b>	WB,IF
<b>Reactivity :</b>	Rat,Mouse,Human
<b>Gene :</b>	SYT1
<b>Gene ID :</b>	6857
<b>Uniprot ID :</b>	P21579/Q89I0
<b>Format :</b>	Purified
<b>Alternative Name :</b>	SYT1/2, SytI/II, Synaptotagmin I/II, P65, SYT
<b>Isotype :</b>	Rabbit IgG
<b>Immunogen Information :</b>	Peptide sequence around aa.200~204/197~201 (R-K-T-L-N) derived from Human Synaptotagmin 1/2.

### Description

The synaptotagmins are integral membrane proteins of synaptic vesicles thought to serve as Ca(2+) sensors in the process of vesicular trafficking and exocytosis. Calcium binding to synaptotagmin I participates in triggering neurotransmitter release at the synapse Gustavsson N, et al. Proc Natl Acad Sci U S A. 2008 Mar 11; 105(10):3992-7. Cnops L, et al. Cereb Cortex. 2008 May; 18(5):1221-31. Lynch KL, et al. Mol Biol Cell. 2007 Dec; 18(12):4957-68.

### Product Info

<b>Amount :</b>	50 µl / 100 µl
<b>Content :</b>	Supplied at 1.0mg/mL in phosphate buffered saline (without Mg <sup>2+</sup> and Ca <sup>2+</sup> ), pH 7.4, 150mM NaCl, 0.02% sodium azide and 50% glycerol.
<b>Storage condition :</b>	Store the antibody at 4°C, stable for 6 months. For long-term storage, store at -20°C. Avoid repeated freeze and thaw cycles.

### Application Note

Predicted MW: 46kd, Western blotting: 1:500~1:1000, Immunofluorescence: 1:100~1:200

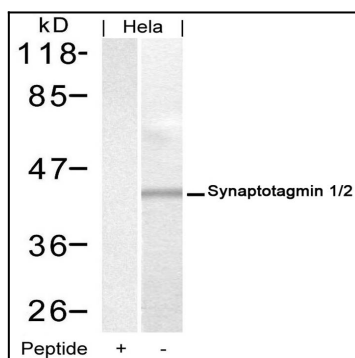


Figure 1: Western blot analysis of extracts from HeLa cells using Synaptotagmin 1/2(Ab-202/199) Antibody 35-1622 and the same antibody preincubated with blocking peptide.

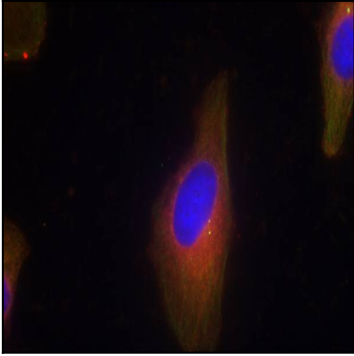


Figure 2: Immunofluorescence staining of methanol-fixed HeLa cells using Synaptotagmin 1/2(Ab-202/199) Antibody 35-1622 .