

35-1621: Polyclonal Antibody to Synaptotagmin 1 (Ab-309)

Clonality :	Polyclonal
Application :	WB,IF
Reactivity :	Rat,Mouse,Human
Gene :	SYT1
Gene ID :	6857
Uniprot ID :	P21579
Format :	Purified
Alternative Name :	SYT1, SytI, Synaptotagmin I, P65, SYT
Isotype :	Rabbit IgG
Immunogen Information :	Peptide sequence around aa.307~311 (G-L-S-D-P) derived from Human Synaptotagmin 1.

Description

The synaptotagmins are integral membrane proteins of synaptic vesicles thought to serve as Ca²⁺ sensors in the process of vesicular trafficking and exocytosis. Calcium binding to synaptotagmin I participates in triggering neurotransmitter release at the synapse Gustavsson N, et al. Proc Natl Acad Sci U S A. 2008 Mar 11; 105(10):3992-7. Cnops L, et al. Cereb Cortex. 2008 May; 18(5):1221-31. Lynch KL, et al. Mol Biol Cell. 2007 Dec; 18(12):4957-68.

Product Info

Amount :	50 µl / 100 µl
Content :	Supplied at 1.0mg/mL in phosphate buffered saline (without Mg ²⁺ and Ca ²⁺), pH 7.4, 150mM NaCl, 0.02% sodium azide and 50% glycerol.
Storage condition :	Store the antibody at 4°C, stable for 6 months. For long-term storage, store at -20°C. Avoid repeated freeze and thaw cycles.

Application Note

Predicted MW: 60-65kd, Western blotting: 1:500~1:1000, Immunofluorescence: 1:100~1:200

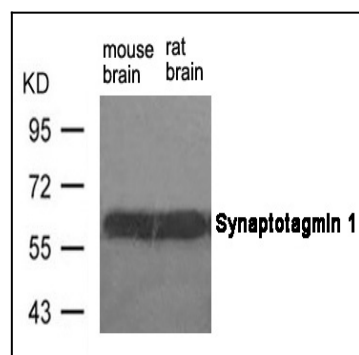


Figure 1: Western blot analysis of extracts from mouse brain and rat brain tissue using Synaptotagmin 1 (Ab-309) Antibody 35-1621 .

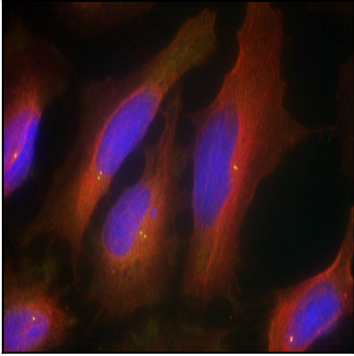


Figure 2: Immunofluorescence staining of methanol-fixed HeLa cells using Synaptotagmin 1 (Ab-309) Antibody 35-1621 .