

## 35-1618: Polyclonal Antibody to PKC Delta (Ab-645)

<b>Clonality :</b>	Polyclonal
<b>Application :</b>	WB,IHC,IF
<b>Reactivity :</b>	Human
<b>Gene :</b>	PRKCD
<b>Gene ID :</b>	5580
<b>Uniprot ID :</b>	Q05655
<b>Format :</b>	Purified
<b>Alternative Name :</b>	nPKC-delta
<b>Isotype :</b>	Rabbit IgG
<b>Immunogen Information :</b>	Peptide sequence around aa. 643~647 (R-L-S-Y-S) derived from Human PKCd.

### Description

This is calcium-independent, phospholipid-dependent, serine- and threonine-specific enzyme. PKC is activated by diacylglycerol, which in turn phosphorylates a range of cellular proteins. PKC also serves as the receptor for phorbol esters, a class of tumor promoters. May play a role in antigen-dependent control of B-cell function. Phosphorylates MUC1 in the C-terminal and regulates the interaction between MUC1 and beta-catenin.

### Product Info

<b>Amount :</b>	50 $\mu$ l / 100 $\mu$ l
<b>Content :</b>	Supplied at 1.0mg/mL in phosphate buffered saline (without Mg <sup>2+</sup> and Ca <sup>2+</sup> ), pH 7.4, 150mM NaCl, 0.02% sodium azide and 50% glycerol.
<b>Storage condition :</b>	Store the antibody at 4°C, stable for 6 months. For long-term storage, store at -20°C. Avoid repeated freeze and thaw cycles.

### Application Note

Predicted MW: 78kd, Western blotting: 1:500~1:1000, Immunohistochemistry: 1:50~1:100, Immunofluorescence: 1:100~1:200

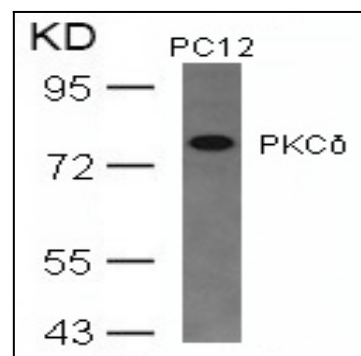


Figure 1: Western blot analysis of extracts from PC12 cells using PKC $\delta$ (Ab-645) Antibody 35-1618 .

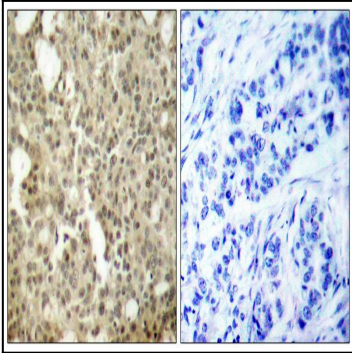


Figure 2: Immunohistochemical analysis of paraffin-embedded human breast carcinoma tissue using PKCd(Ab-645) Antibody 35-1618 (left) or the same antibody preincubated with blocking peptide(right).

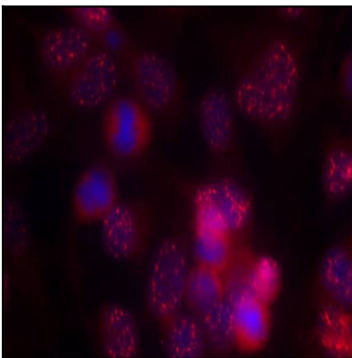


Figure 3: Immunofluorescence staining of methanol-fixed HeLa cells using PKCd(Ab-645) Antibody 35-1618 .