

### 35-1616: Polyclonal Antibody to MEK1 (Ab-291)

<b>Clonality :</b>	Polyclonal
<b>Application :</b>	WB,IHC
<b>Reactivity :</b>	Human,Mouse,Rat
<b>Gene :</b>	MAP2K1
<b>Gene ID :</b>	5604
<b>Uniprot ID :</b>	Q02750
<b>Format :</b>	Purified
<b>Alternative Name :</b>	ERK activator kinase 1, MAP kinase kinase 1, MAP2K1, MAPK/ERK kinase 1, MAPKK 1
<b>Isotype :</b>	Rabbit IgG
<b>Immunogen Information :</b>	Peptide sequence around aa. 289~293 (P-R-T-P-G) derived from Human MEK1.

#### Description

Catalyzes the concomitant phosphorylation of a threonine and a tyrosine residue in a Thr-Glu-Tyr sequence located in MAP kinases. Activates ERK1 and ERK2 MAP kinases.

#### Product Info

<b>Amount :</b>	50 $\mu$ l / 100 $\mu$ l
<b>Content :</b>	Supplied at 1.0mg/mL in phosphate buffered saline (without Mg <sup>2+</sup> and Ca <sup>2+</sup> ), pH 7.4, 150mM NaCl, 0.02% sodium azide and 50% glycerol.
<b>Storage condition :</b>	Store the antibody at 4°C, stable for 6 months. For long-term storage, store at -20°C. Avoid repeated freeze and thaw cycles.

#### Application Note

Predicted MW: 45kd, Western blotting: 1:500~1:1000, Immunohistochemistry: 1:50~1:100

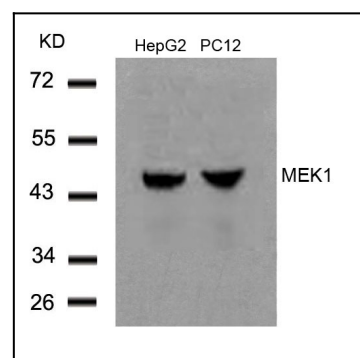


Figure 1: Western blot analysis of extracts from HepG2 and PC12 cells using MEK1(Ab-291) Antibody 35-1616 .

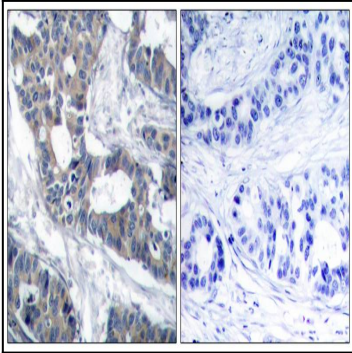


Figure 2: Immunohistochemical analysis of paraffin-embedded human breast carcinoma tissue using MEK1(Ab-291) Antibody 35-1616 (left) or the same antibody preincubated with blocking peptide(right).