

### 35-1613: Polyclonal Antibody to Gab1 (Ab-627)

<b>Clonality :</b>	Polyclonal
<b>Application :</b>	WB
<b>Reactivity :</b>	Human,Mouse
<b>Gene :</b>	GAB1
<b>Gene ID :</b>	2549
<b>Uniprot ID :</b>	Q13480
<b>Format :</b>	Purified
<b>Alternative Name :</b>	Growth factor receptor bound protein 2-associated protein 1
<b>Isotype :</b>	Rabbit IgG
<b>Immunogen Information :</b>	Peptide sequence around aa.625~629 (V-E-Y-L-D) derived from Human Gab1.

#### Description

The protein encoded by Gab1 is a member of the IRS1-like multisubstrate docking protein family. It is an important mediator of branching tubulogenesis and plays a central role in cellular growth response, transformation and apoptosis. Two transcript variants encoding different isoforms have been found for this gene. Anders Kallin, et al. (2004) J. Biol. Chem; 279: 17897 - 17904. Hideto Kameda, et al. (2001) Cell Growth Differ; 12: 307. Masaki Osawa, et al. (2002) J. Cell Biol; 158: 773.

#### Product Info

<b>Amount :</b>	50 $\mu$ l / 100 $\mu$ l
<b>Content :</b>	Supplied at 1.0mg/mL in phosphate buffered saline (without Mg <sup>2+</sup> and Ca <sup>2+</sup> ), pH 7.4, 150mM NaCl, 0.02% sodium azide and 50% glycerol.
<b>Storage condition :</b>	Store the antibody at 4°C, stable for 6 months. For long-term storage, store at -20°C. Avoid repeated freeze and thaw cycles.

#### Application Note

Predicted MW: 110kd, Western blotting: 1:500~1:1000

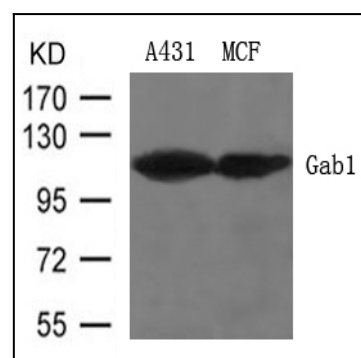


Figure 1: Western blot analysis of extracts from A431 and MCF cells using Gab1 (Ab-627) Antibody 35-1613 .