

35-1611: Polyclonal Antibody to CPI17 Alpha (Ab-38)

Clonality :	Polyclonal
Application :	IF
Reactivity :	Human,Mouse,Rat
Gene :	PPP1R14A
Gene ID :	94274
Uniprot ID :	Q96A00
Format :	Purified
Alternative Name :	CPI, CPI-17, CPI17, PP14A
Isotype :	Rabbit IgG
Immunogen Information :	Peptide sequence around aa.36~40 (R-V-T-V-K) derived from Human CPI17a.

Description

Inhibitor of PPP1CA. Has over 1000-fold higher inhibitory activity when phosphorylated, creating a molecular switch for regulating the phosphorylation status of PPP1CA substrates and smooth muscle contraction.

Product Info

Amount :	50 µl / 100 µl
Content :	Supplied at 1.0mg/mL in phosphate buffered saline (without Mg ²⁺ and Ca ²⁺), pH 7.4, 150mM NaCl, 0.02% sodium azide and 50% glycerol.
Storage condition :	Store the antibody at 4°C, stable for 6 months. For long-term storage, store at -20°C. Avoid repeated freeze and thaw cycles.

Application Note

Predicted MW: 17kd, Immunofluorescence: 1:100~1:200

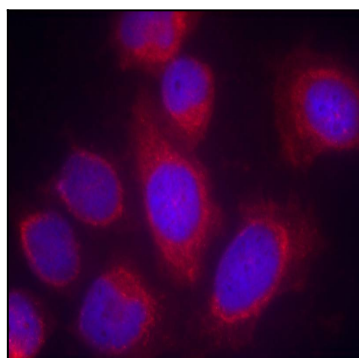


Figure 1: Immunofluorescence staining of methanol-fixed HeLa cells using CPI17a(Ab-38) Antibody 35-1611 .