

35-1610: Polyclonal Antibody to BIM (Ab-69)

Clonality :	Polyclonal
Application :	WB,IHC
Reactivity :	Human,Mouse,Rat
Gene :	BCL2L11
Gene ID :	10018
Uniprot ID :	O43521
Format :	Purified
Alternative Name :	BCL2-like protein 11, BCL2L11, BOD, Bcl-2 related ovarian death protein
Isotype :	Rabbit IgG
Immunogen Information :	Peptide sequence around aa.67~71 (P-A-S-P-G) derived from Human BIM.

Description

Induces apoptosis. Isoform BimL is more potent than isoform BimEL. Isoform Bim-a1, isoform Bim-a2 and isoform Bim-a3 induce apoptosis, although less potent than the isoforms BimEL, BimL and BimS. Isoform Bim-gamma induces apoptosis.

Product Info

Amount :	50 µl / 100 µl
Content :	Supplied at 1.0mg/mL in phosphate buffered saline (without Mg ²⁺ and Ca ²⁺), pH 7.4, 150mM NaCl, 0.02% sodium azide and 50% glycerol.
Storage condition :	Store the antibody at 4°C, stable for 6 months. For long-term storage, store at -20°C. Avoid repeated freeze and thaw cycles.

Application Note

Predicted MW: 23kd, Western blotting: 1:500~1:1000, Immunohistochemistry: 1:50~1:100

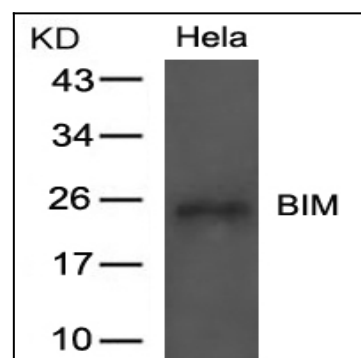


Figure 1: Western blot analysis of extracts from HeLa cells using BIM(Ab-69) Antibody 35-1610 .

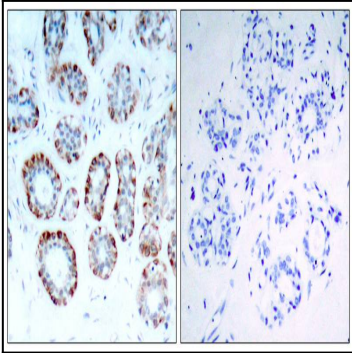


Figure 2: Immunohistochemical analysis of paraffin-embedded human breast carcinoma tissue using BIM(Ab-69) Antibody 35-1610 (left) or the same antibody preincubated with blocking peptide(right).