

## 35-1609: Polyclonal Antibody to CaMKII (Ab-286)

<b>Clonality :</b>	Polyclonal
<b>Application :</b>	WB,IF
<b>Reactivity :</b>	Rat,Mouse,Human
<b>Gene :</b>	CAMK2A
<b>Gene ID :</b>	815
<b>Uniprot ID :</b>	Q9UQM7
<b>Format :</b>	Purified
<b>Alternative Name :</b>	CAMKA
<b>Isotype :</b>	Rabbit IgG
<b>Immunogen Information :</b>	Peptide sequence around aa.284~288 (Q-E-T-V-D) derived from Human CaMKII.

### Description

CaM-kinase II (CAMK2) is a prominent kinase in the central nervous system that may function in long-term potentiation and neurotransmitter release. Member of the NMDAR signaling complex in excitatory synapses it may regulate NMDAR-dependent potentiation of the AMPAR and synaptic plasticity

### Product Info

<b>Amount :</b>	50 $\mu$ l / 100 $\mu$ l
<b>Content :</b>	Supplied at 1.0mg/mL in phosphate buffered saline (without Mg <sup>2+</sup> and Ca <sup>2+</sup> ), pH 7.4, 150mM NaCl, 0.02% sodium azide and 50% glycerol.
<b>Storage condition :</b>	Store the antibody at 4°C, stable for 6 months. For long-term storage, store at -20°C. Avoid repeated freeze and thaw cycles.

### Application Note

Predicted MW: 50kd, Western blotting: 1:500~1:1000, Immunofluorescence: 1:100~1:200

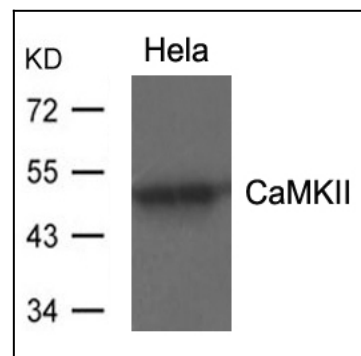


Figure 1: Western blot analysis of extracts from HeLa using CaMKII(Ab-286) Antibody 35-1609 .

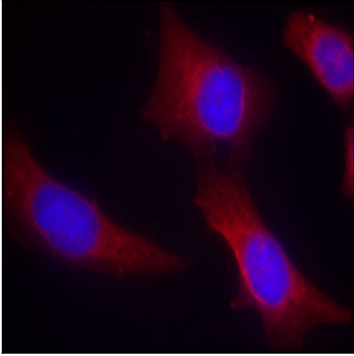


Figure 2: Immunofluorescence staining of paraffin-embedded human hippocampal region tissue from the falling sickness disease using CaMKII(Ab-286) Antibody 35-1609 .